

Instructions for Parts Books

The heading at the top of the page will be the same for the picture of the parts at it is for the page with the part numbers.

Definition of column headings on part number pages:

REF.No → The number referring to the part on the picture page of the parts book.

Part No. → The number assigned to this part at the time of printing the parts book.

Description → Discription of part.

Q'ty → Quantity of part used on that page.

S.No. → Serial number range of the equipment that this part will fit.

>= Your serial number should be greater than or equal to the number shown.

<= Your serial number should be lesser than or equal to the serial number shown.

I/C → Interchangeability of part shown.

↔ The part shown will work for the older and later serial number.

The part shown is not interchangeable with the other serial number.

← new for old

→ old for new

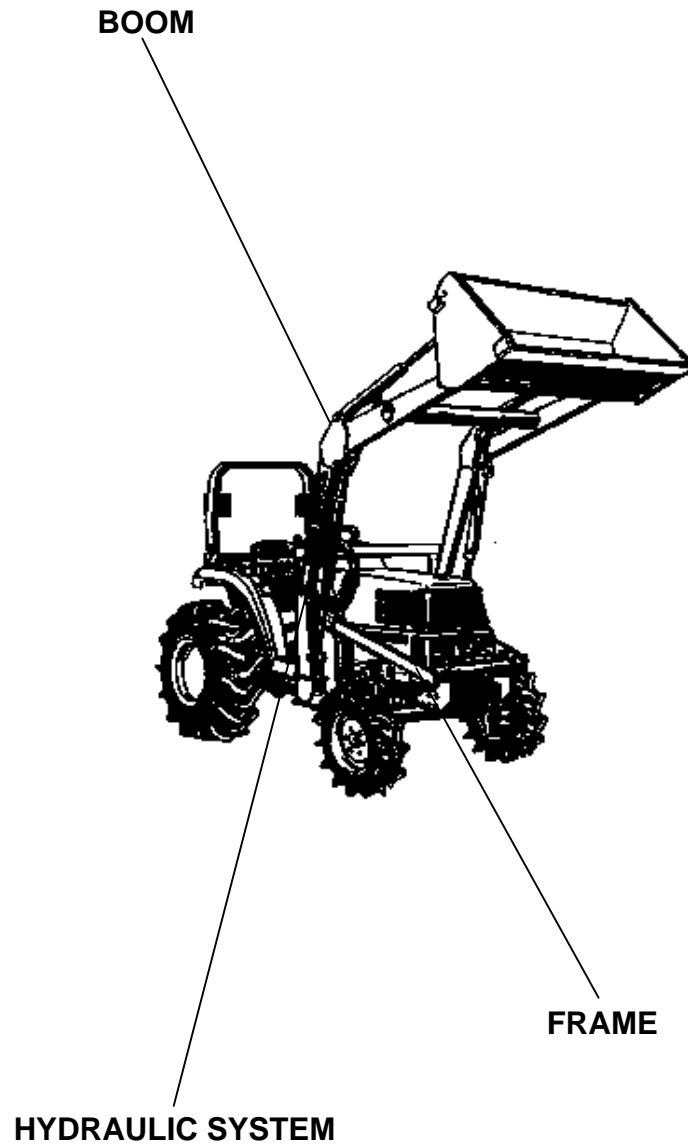
Remarks → Notes about this particulart part. Sometimes this may say except [FR] or [CA]

Note about Country Codes:

The parts books we use in the United States of America may also contain information about a part that would be different in another country. It is important that you are aware of the country codes in some instances.

Symbol	Country
A	United States of America
CA	Canada
FR	France
GR	Greece
PO	Portugal
AU	Australia

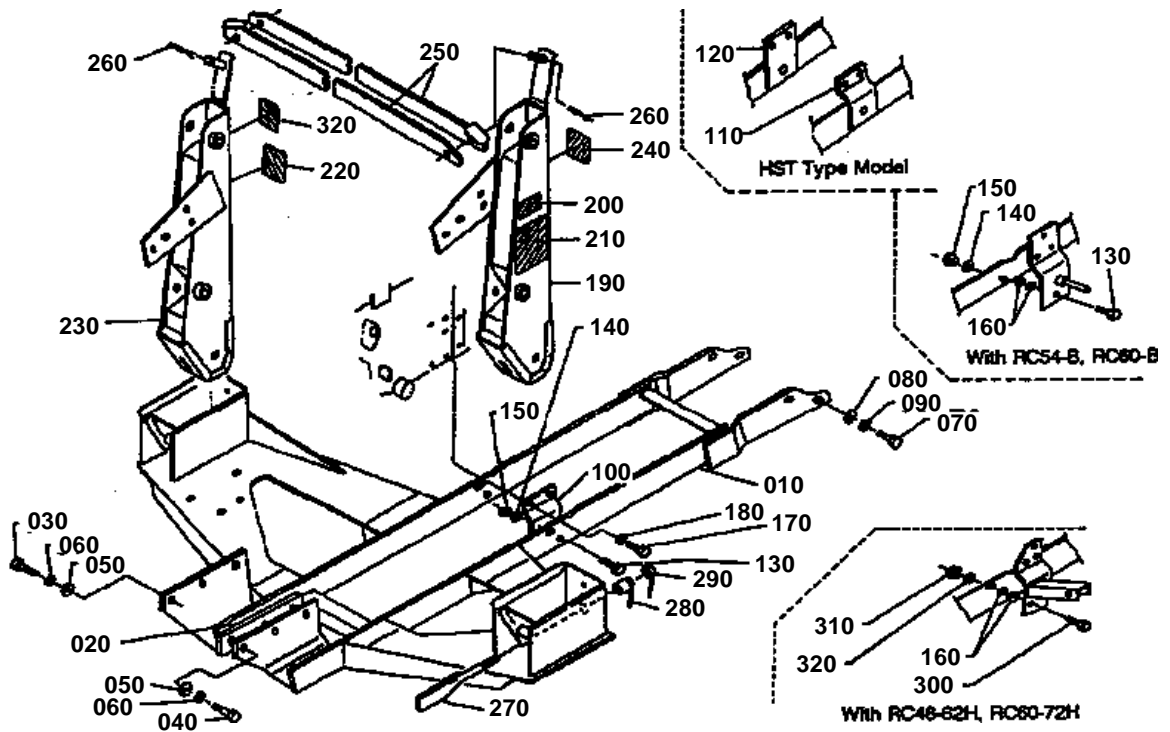
If the remarks column says for example EXCEPT [FR] this part works in all countries except France. That means it will work here in the USA.



ACCESSORIES

Item	Part No.	Description	Book
FRAME	01I001	MAIN FRAME	100K0455
BOOM	01I002	BOOM	100K0455
HYDRAULIC SYSTEM	01I003	OIL PRESSURE (1)	100K0455
	01I004	CONTROL VALVE [COMPONENT PARTS]	100K0455
	01I00501	CYLINDER 1 (BOOM) [COMPONENT PARTS]	100K0455
	01I00502	CYLINDER 1 (BOOM) [COMPONENT PARTS]	100K0455
	01I00601	CYLINDER 2 (BUCKET) [COMPONENT PARTS]	100K0455
	01I00602	CYLINDER 2 (BUCKET) [COMPONENT PARTS]	100K0455
	01I007	OIL PRESSURE (2)	100K0455
FRAME	01I008	FRONT GUARD [OPTION]	100K0455
ACCESSORIES	01I009	ACCESSORIES AND SERVICE PARTS	100K0455

MAIN FRAME

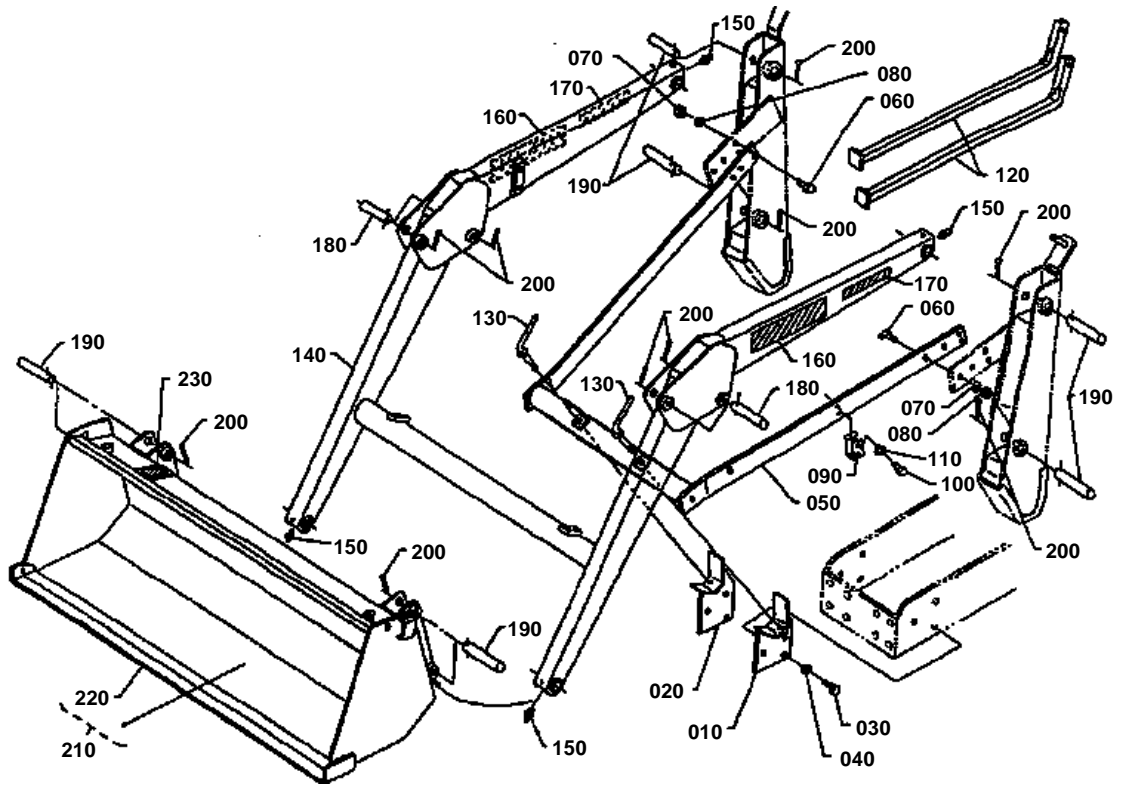


**MAIN FRAME**

↔ Interchangeable; ≠ not interchangeable; ← new for old; → old for new

REF.No	Part No.	Description	Q'ty	S.No.	I/C	REMARKS	Weight (kgf)	Weight (lb)
010	75532-55010	SUB FRAME	1				0	0
020	75532-55710	SPACER	1				0	0
030	01073-51035	HEX.BOLT(M10*1.25*35	3				0.031	0.0682
040	01073-51050	HEX.BOLT(M10*1.25*50	3				0.038	0.0836
050	75599-32013	WASHER PLAIN(3/8)	6				0.03	0.066
060	04512-50100	WASHER SPRING LOCK(M	6				0	0
070	01050-51260	HEX.BOLT(M12*1.75*60	4				0	0
080	75599-32015	WASHER PLAIN(1/2)	4				0	0
090	04512-50120	WASHER SPRING LOCK(M	4				0	0
100	75532-55910	CONNECTOR(GEAR)	2				0	0
110	75532-55920	CONNECTOR LH (HST)	1				0	0
120	75532-55930	CONNECTOR RH (HST)	1				0	0
130	75599-04635	HEX.BOLT(9/16-18UNF*	2				0	0
140	75599-33016	WASHER SPRING LOCK(9	2				0.08	0.176
150	75599-31066	HEX.NUT(9/16-18UNF)	2				0	0
160	75599-32016	WASHER PLAIN(9/16)	2			FOR MOWER ONLY	0.009	0.0198
170	01073-51035	HEX.BOLT(M10*1.25*35	4				0.031	0.0682
180	04512-50100	WASHER SPRING LOCK(M	4				0	0
190	75532-56010	FRAME SIDE LH	1				0	0
200	75532-56350	LABEL MODEL	1				0	0
210	75540-56360	LABEL CAUTION	1				0	0
220	75580-56370	LABEL LUBRICATE	1				0	0
230	75532-56030	FRAME SIDE RH	1				0	0
240	75540-56650	LABEL WARNING	1				0	0
250	75530-56710	CONNECTOR SIDE FRAME	2				0	0
260	75540-56720	PIN SPRING	2				0	0
270	75540-56810	BOLT WEDGE	2				0	0
280	75540-56820	NUT 1 LOCK	2				0	0
290	75540-56830	NUT 2 LOCK	2				0	0
300	75599-03535	HEX.BOLT(1/2-13UNC*1	2				0	0
310	75599-31015	HEX.NUT(1/2-13UNC)	2				0	0
320	75599-33015	WASHER SPRING LOCK(1	2				0	0
330	75540-62360	LABEL CONTROL	1				0	0

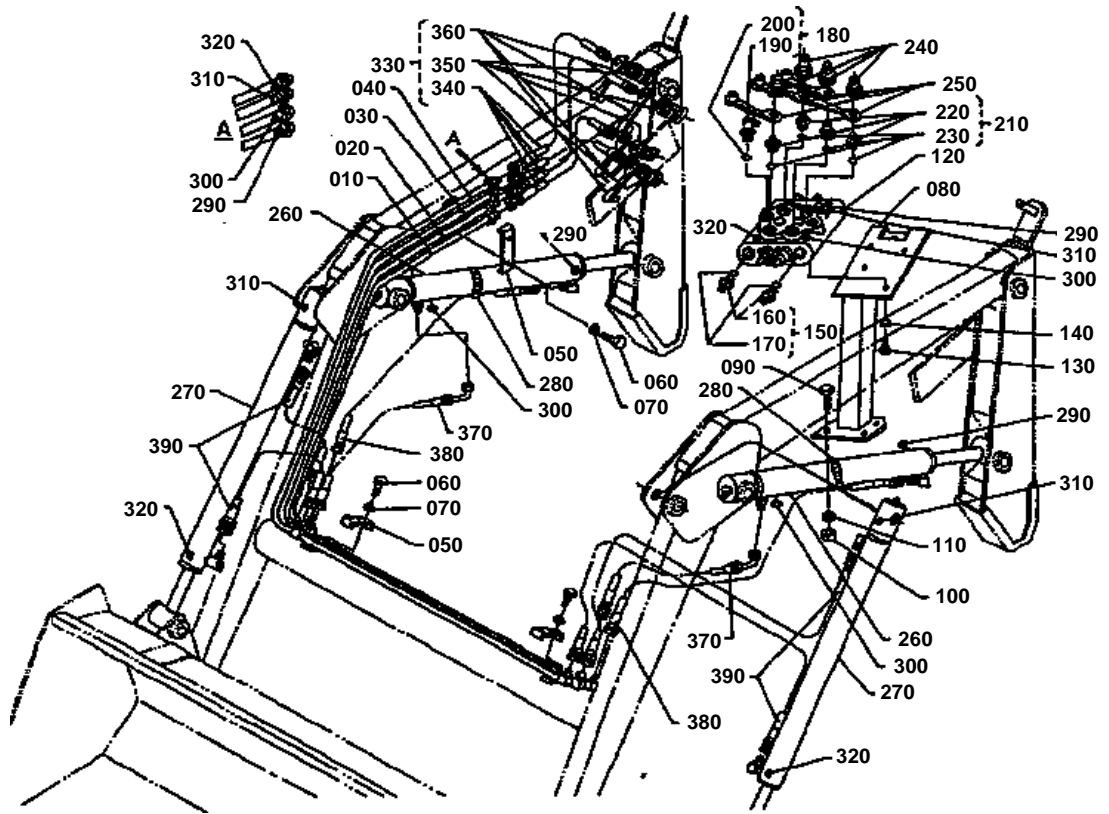
BOOM



**BOOM**

↔ Interchangeable; ≠ not interchangeable; ← new for old; → old for new

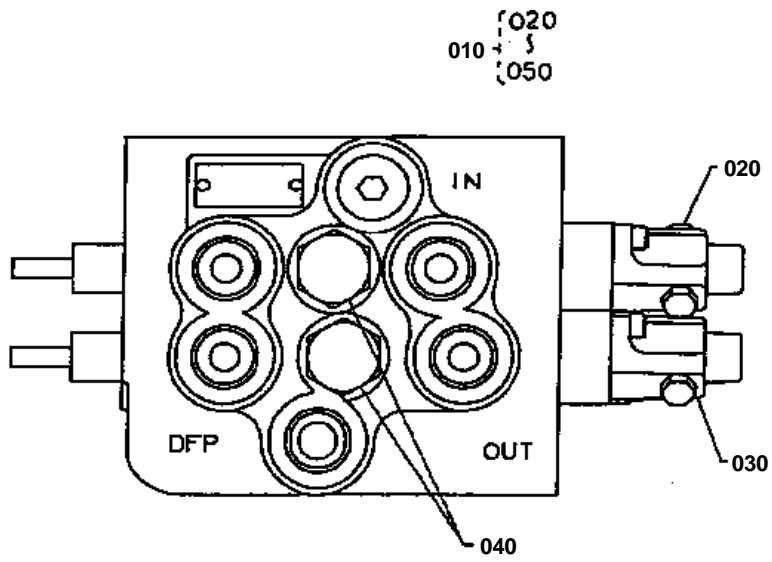
REF.No	Part No.	Description	Q'ty	S.No.	I/C	REMARKS	Weight (kgf)	Weight (lb)
010	75532-57100	SUPPORT BRACE LH	1				0	0
020	75532-57200	SUPPORT BRACE RH	1				0	0
030	01073-51225	HEX.BOLT(M12*1.25*25	6				0.035	0.077
040	04512-50120	WASHER SPRING LOCK(M	6				0	0
050	75532-57400	BRACE	1				0	0
060	75599-04530	HEX.BOLT(1/2-20UNF*1	8				0	0
070	75599-31025	HEX.NUT(1/2-20UNF)	8				0	0
080	75599-33015	WASHER SPRING LOCK(1	8				0	0
090	75530-57630	PLATE SPRING	1				0	0
100	75599-01210	HEX.BOLT(5/16-18UNC*	2				0.01	0.022
110	75599-33012	WASHER SPRING LOCK(5	2				0.002	0.0044
120	75532-57550	STAND	2				0	0
130	75532-57610	BOLT MOUNTING	2				0	0
140	75532-58010	BOOM	1				0	0
150	75599-81520	FITTING GREASE(1/4-2	4				0	0
160	75580-58452	LABEL KUBOTA	2				0	0
170	75532-58460	LABEL LA300	2				0	0
180	75532-58510	PIN 1	4				0	0
190	75532-58740	PIN 4	8				0	0
200	75599-53216	PIN COTTER(3/16*1 3/	12				0	0
210	75532-59010	BUCKET 48	1				0	0
220	75532-59320	EDGE CUTTING	1				0	0
230	75540-59450	LABEL LEVELER	1				0	0



**OIL PRESSURE (1)**

↔ Interchangeable; ≠ not interchangeable; ← new for old; → old for new

REF.No	Part No.	Description	Q'ty	S.No.	I/C	REMARKS	Weight (kgf)	Weight (lb)
010	75532-65110	TUBE 1 HYDRAULIC	1				0	0
020	75532-65210	TUBE 2 HYDRAULIC	1				0	0
030	75532-65310	TUBE 3 HYDRAULIC	1				0	0
040	75532-65410	TUBE 4 HYDRAULIC	1				0	0
050	75532-65510	CLAMP	3				0	0
060	75599-01220	HEX.BOLT(5/16-18UNC*	6				0	0
070	75599-33012	WASHER SPRING LOCK(5	6				0.002	0.0044
080	75532-61100	COMP STAY VALVE	1				0	0
090	75599-02320	HEX.BOLT(3/8-24UNF*1	4				0	0
100	75599-31023	HEX.NUT(3/8-24UNF)	4				0.006	0.0132
110	75599-33013	WASHER SPRING LOCK(3	4				0	0
120	75532-61010	VALVE CONTROL	1				0	0
130	75599-01115	HEX.BOLT(1/4-20UNC*3	2				0	0
140	75599-33011	WASHER SPRING LOCK(1	2				0	0
150	75540-61800	ASSY ADAPTER 1	2				0	0
160	75540-61810	ADAPTER 1	2				0	0
170	75540-61820	O-RING	2				0	0
180	75540-61900	ASSY ELBOW ADJUSTABL	1				0	0
190	75540-61910	ELBOW ADJUSTABLE	1				0	0
200	75540-61820	O-RING	1				0	0
210	75532-61800	ASSY ADAPTER 2	4				0	0
220	75532-61810	ADAPTER 2	4				0	0
230	75540-61820	O-RING	4				0	0
240	75532-66220	NIPPLE	4				0	0
250	75532-66430	CAP DUST	4				0	0
260	75532-63010	CYLINDER 1	2	<=11723			0	0
260	75536-63010	CYLINDER 1	2	>=11724	↔		0	0
270	75532-64010	CYLINDER 2	2	<=11723			0	0
270	75536-64010	CYLINDER 2	2	>=11724	↔		0	0
280	75590-64650	BAND CODE	2				0	0
290	75540-64950	MARK WHITE	4				0	0
300	75540-64960	MARK YELLOW	4				0	0
310	75540-64970	MARK BLUE	4				0	0
320	75540-64980	MARK RED	4				0	0
330	75532-66100	ASSY HOSE 1 HYDRAULI	4				0	0
340	75532-66110	HOSE 1 HYDRAULIC	4				0	0
350	75532-66320	COUPLER	4				0	0
360	75532-66330	PLUG DUST	4				0	0
370	75532-66610	HOSE 8 HYDRAULIC	2				0	0
380	75532-66620	HOSE 9 HYDRAULIC	2	<=11723			0	0
380	75536-66620	HOSE 9 HYDRAULIC	2	>=11724	≠		0	0
390	75532-66630	HOSE 10 HYDRAULIC	4				0	0



050 : NOT SHOWING IN FIG.

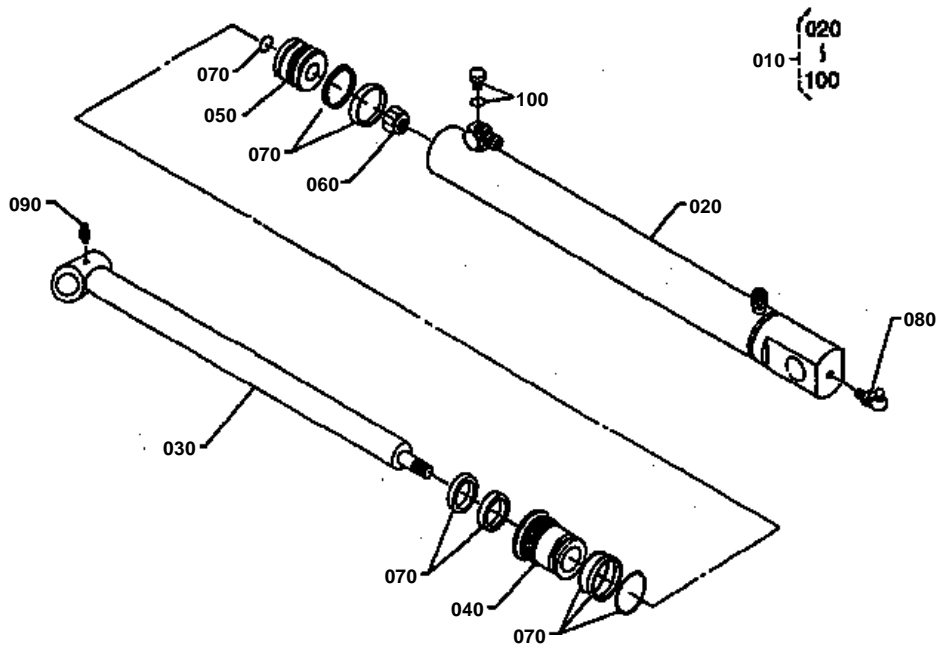


CONTROL VALVE [COMPONENT PARTS]

↔ Interchangeable; ≠ not interchangeable; ← new for old; → old for new

REF.No	Part No.	Description	Q'ty	S.No.	I/C	REMARKS	Weight (kgf)	Weight (lb)
010	75532-61010	VALVE CONTROL	1				0	0
020	75532-61300	KIT DETENT FLOAT	1				0	0
030	75532-61400	KIT DETENT REGEN.	1				0	0
040	75530-61800	KIT LOAD CHECK	2				0	0
050	75532-61900	KIT SEAL	1				0	0

CYLINDER 1 (BOOM) [COMPONENT PARTS]



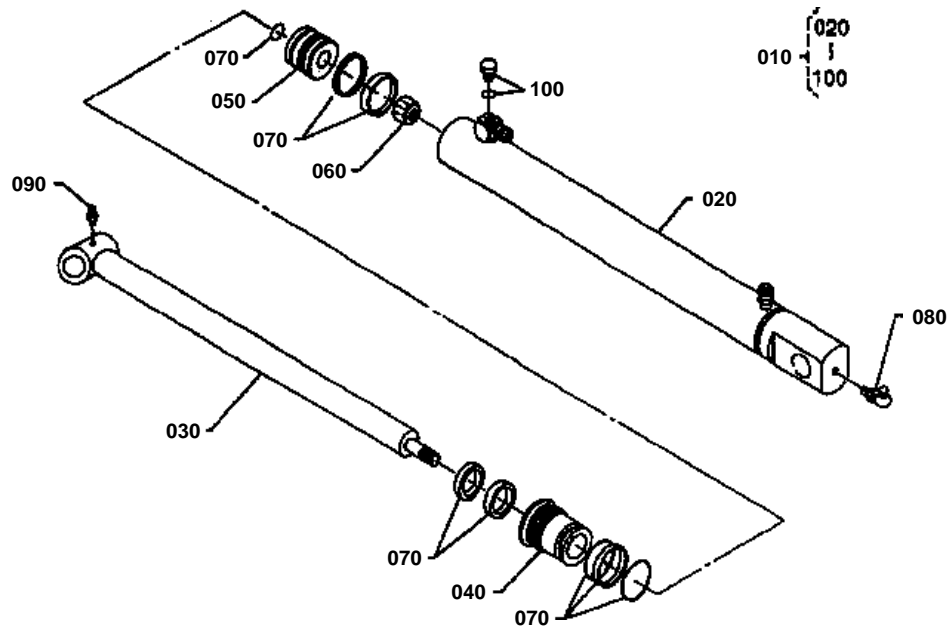


CYLINDER 1 (BOOM) [COMPONENT PARTS]
S.No.;<=11723

↔ Interchangeable; ≠ not interchangeable; ← new for old; → old for new

REF.No	Part No.	Description	Q'ty	S.No.	I/C	REMARKS	Weight (kgf)	Weight (lb)
010	75532-63010	CYLINDER 1	2				0	0
020	75532-63100	TUBE 1 COMP	2				0	0
030	75532-63200	ROD 1 COMP	2				0	0
040	75532-63310	HEAD	2				0	0
050	75532-63350	PISTON	2				0	0
060	75532-63360	NUT	2				0	0
070	75532-63400	KIT SEAL	2				0	0
080	75532-63470	FITTING GREASE(90DEG	2				0	0
090	75599-81531	FITTING GREASE(1/8-2	2				0	0
100	75590-13270	PLUG	2				0	0

CYLINDER 1 (BOOM) [COMPONENT PARTS]



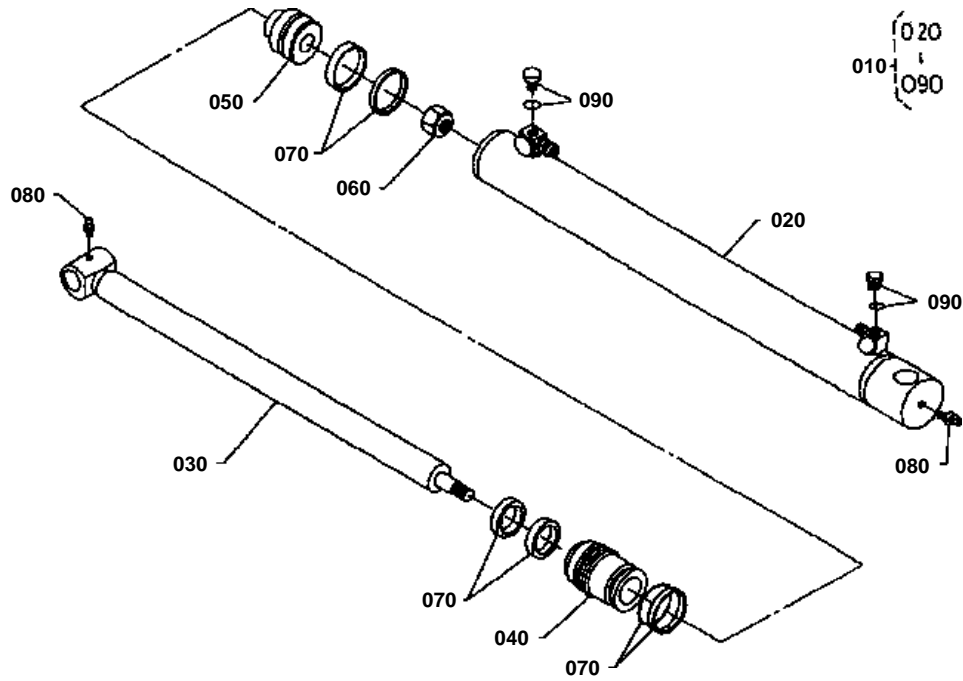


CYLINDER 1 (BOOM) [COMPONENT PARTS]
S.No.;>=11724

↔ Interchangeable; ≠ not interchangeable; ← new for old; → old for new

REF.No	Part No.	Description	Q'ty	S.No.	I/C	REMARKS	Weight (kgf)	Weight (lb)
010	75536-63010	CYLINDER 1(ILLUSTRAT	2				0	0
020	75536-63100	TUBE 1 COMP	2				0	0
030	75536-63200	ROD 1 COMP	2				0	0
040	75536-63310	HEAD	2				0	0
050	75536-63350	PISTON	2				0	0
060	75536-63360	NUT	2				0	0
070	75536-63400	KIT SEAL	2				0	0
080	75532-63470	FITTING GREASE(90DEG	2				0	0
090	75599-81531	FITTING GREASE(1/8-2	2				0	0
100	75590-13270	PLUG	2				0	0

CYLINDER 2 (BUCKET) [COMPONENT PARTS]



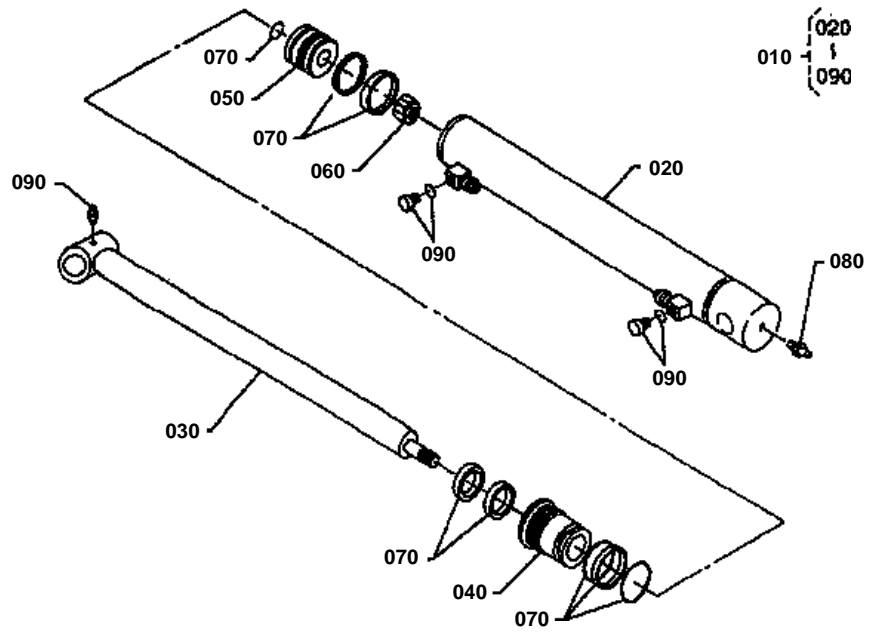


CYLINDER 2 (BUCKET) [COMPONENT PARTS]
S.No.;<=11723

↔ Interchangeable; ≠ not interchangeable; ← new for old; → old for new

REF.No	Part No.	Description	Q'ty	S.No.	I/C	REMARKS	Weight (kgf)	Weight (lb)
010	75532-64010	CYLINDER 2	2				0	0
020	75532-64100	TUBE 2 COMP	2				0	0
030	75532-64200	ROD 2 COMP	2				0	0
040	75532-63310	HEAD	2				0	0
050	75532-63350	PISTON	2				0	0
060	75532-63360	NUT	2				0	0
070	75532-63400	KIT SEAL	2				0	0
080	75599-81531	FITTING GREASE(1/8-2	4				0	0
090	75590-13270	PLUG	4				0	0

CYLINDER 2 (BUCKET) [COMPONENT PARTS]

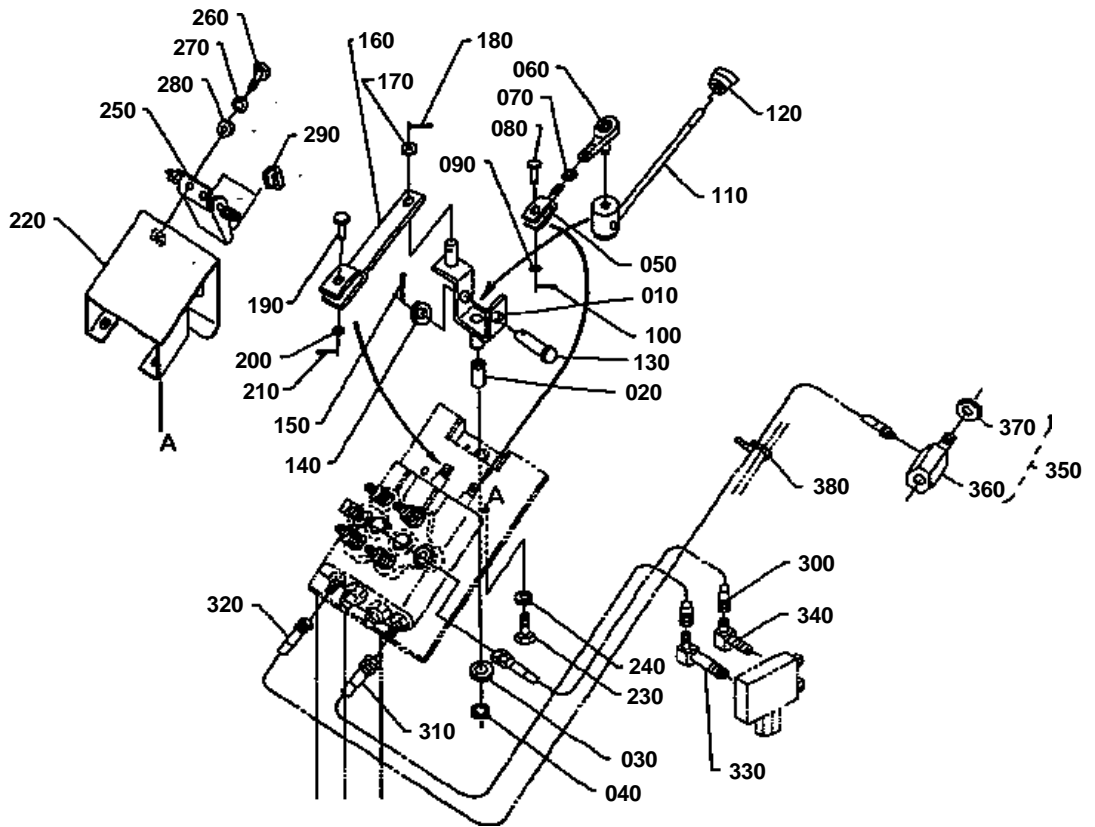




CYLINDER 2 (BUCKET) [COMPONENT PARTS]
S.No.;>=11724

↔ Interchangeable; ≠ not interchangeable; ← new for old; → old for new

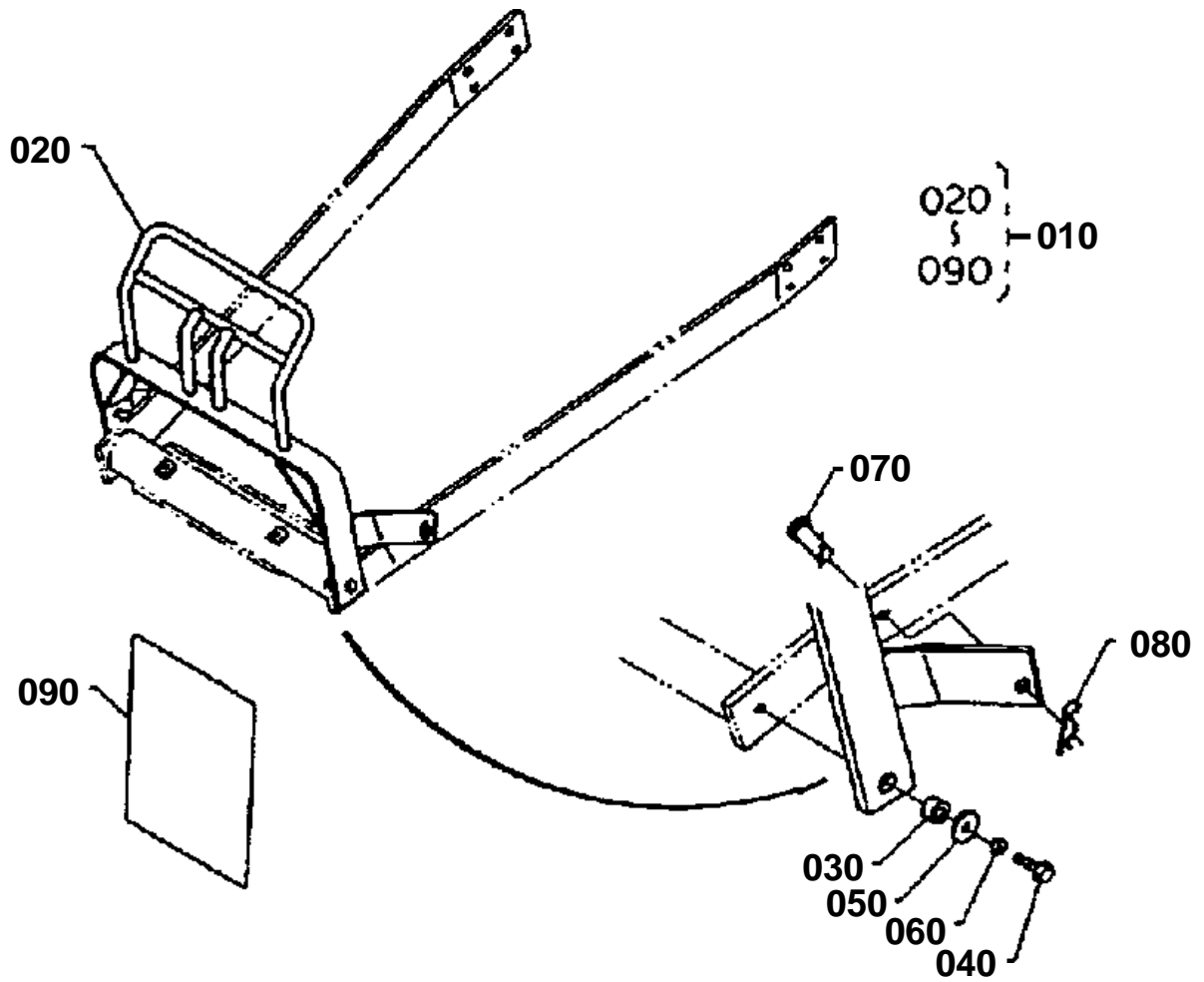
REF.No	Part No.	Description	Q'ty	S.No.	I/C	REMARKS	Weight (kgf)	Weight (lb)
010	75536-64010	CYLINDER 2(ILLUSTRAT	2				0	0
020	75536-64100	TUBE 2 COMP	2				0	0
030	75536-64200	ROD 2 COMP	2				0	0
040	75536-63310	HEAD	2				0	0
050	75536-63350	PISTON	2				0	0
060	75536-63360	NUT	2				0	0
070	75536-63400	KIT SEAL	2				0	0
080	75599-81531	FITTING GREASE(1/8-2	4				0	0
090	75590-13270	PLUG	4				0	0



**OIL PRESSURE (2)**

↔ Interchangeable; ≠ not interchangeable; ← new for old; → old for new

REF.No	Part No.	Description	Q'ty	S.No.	I/C	REMARKS	Weight (kgf)	Weight (lb)
010	75532-62110	LEVER	1				0	0
020	75540-62140	BUSHING	1				0	0
030	75599-32017	WASHER PLAIN(5/8)	1				0	0
040	75599-41522	CIR-CLIP EXTERNAL(5/	1				0	0
050	75532-62160	ROD 1	1				0	0
060	75532-62260	JOINT ROD END	1				0	0
070	75599-31022	HEX.NUT(5/16-24UNF)	1				0	0
080	75599-51115	PIN CLEVIS(1/4*3/4)	1				0	0
090	75599-32011	WASHER PLAIN(1/4)	1				0.001	0.0022
100	75599-53131	PIN COTTER(1/16*1/2)	1				0	0
110	75532-62210	LEVER CONTROL	1				0	0
120	31355-82520	GRIP LEVER	1				0.05	0.11
130	75599-51540	PIN CLEVIS(1/2*2)	1				0	0
140	75599-32015	WASHER PLAIN(1/2)	1				0	0
150	75599-53173	PIN COTTER(1/8*1)	1				0.002	0.0044
160	75532-62280	ROD 2	1				0	0
170	75599-32012	WASHER PLAIN(5/16)	1				0.002	0.0044
180	75599-53152	PIN COTTER(3/32*3/4)	1				0	0
190	75599-51115	PIN CLEVIS(1/4*3/4)	1				0	0
200	75599-32011	WASHER PLAIN(1/4)	1				0.001	0.0022
210	75599-53131	PIN COTTER(1/16*1/2)	1				0	0
220	75532-62310	COVER	1				0	0
230	75599-01215	HEX.BOLT(5/16-18UNC*	3				0	0
240	75599-33012	WASHER SPRING LOCK(5	3				0.002	0.0044
250	75540-62400	ASSY LIMITER	1				0	0
260	75599-01212	HEX.BOLT(5/16-18UNC*	2				0	0
270	75599-33012	WASHER SPRING LOCK(5	2				0.002	0.0044
280	75599-32012	WASHER PLAIN(5/16)	2				0.002	0.0044
290	75540-62450	CUSHION 1 RUBBER	2				0	0
300	75532-66310	HOSE 5 HYDRAULIC	1				0	0
310	75532-66410	HOSE 6 HYDRAULIC	1				0	0
320	75532-66510	HOSE 7 HYDRAULIC	1				0	0
330	75532-66810	ELBOW 1	1				0	0
340	75540-66820	ELBOW 2	1				0	0
350	75532-66800	ASSY FITTING RETURN	1				0	0
360	75532-66850	FITTING RETURN	1				0	0
370	75532-66860	JAM NUT	1				0	0
380	75590-64650	BAND CODE	2				0	0





FRONT GUARD [OPTION]

↔ Interchangeable; ≠ not interchangeable; ← new for old; → old for new

REF.No	Part No.	Description	Q'ty	S.No.	I/C	REMARKS	Weight (kgf)	Weight (lb)
010	75530-99500	KIT GUARD FRONT	1				0	0
020	75530-57810	GUARD FRONT	1				0	0
030	75530-57830	COLLAR	2				0	0
040	75599-04625	HEX.BOLT(9/16-18UNF*	2				0	0
050	75599-32016	WASHER PLAIN(9/16)	2				0.009	0.0198
060	75599-33016	WASHER SPRING LOCK(9	2				0.08	0.176
070	75599-51730	PIN CLEVIS(5/8*1 1/2	2				0	0
080	75530-57850	PIN SPRING	2				0	0
090	75530-99520	MANUAL ASSEMBLY	1				0	0

IMAGE NOT AVAILABLE



ACCESSORIES AND SERVICE PARTS

↔ Interchangeable; ≠ not interchangeable; ← new for old; → old for new

REF.No	Part No.	Description	Q'ty	S.No.	I/C	REMARKS	Weight (kgf)	Weight (lb)
010	75532-69110	OPERATOR'S MANUAL	1				0	0
020	75540-99600	KIT LABEL FRENCH	1			REF.No.030 TO 070	0	0
030	75540-99610	LABEL CAUTION	1			FRENCH	0	0
040	75540-99620	LABEL WARNING	1			FRENCH	0	0
050	75540-99630	LABEL LEVELER	1			FRENCH	0	0
060	75540-99640	LABEL CONTROL	1			FRENCH	0	0
070	75580-99650	LABEL LUBRICATE	1			FRENCH	0	0
080	75532-99920	WORKSHOP MANUAL	1				0	0