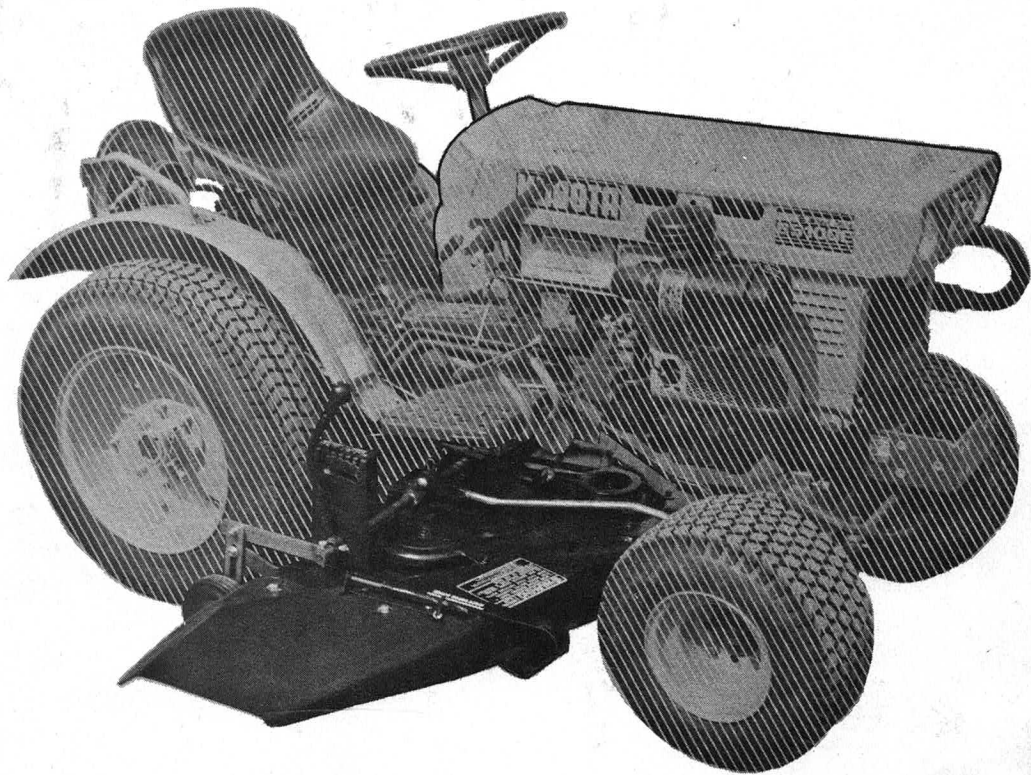


# **MOWER ATTACHMENT**

## **42 INCH**

### **MODEL B-425**



**SAFETY AND  
OPERATION  
INSTRUCTIONS**



## CONGRATULATIONS!

On your purchase of Kubota lawn equipment, one of the finest available. Please take a few moments to review this manual to familiarize yourself with the unit, its features and its operation.

This equipment is sold by Kubota Tractor Corp., 550 W. Artesia Blvd., Compton, CA 90224, Telephone (213) 537-2531. If you should have any questions or encounter any problems, which you feel only the factory can solve, write to the above address or phone, attention the Service Department.

This is a safety operation and general maintenance manual which does not attempt to cover major repairs. Kubota lawn equipment is carefully designed, engineered, and manufactured to give good performance if properly operated and maintained.



This mower has passed rigid safety standards of the Outdoor Power Equipment Institute and an independent testing laboratory.

## GENERAL SAFETY PRECAUTIONS



Preventing accidents is the responsibility of every equipment operator. The following general safety precautions must be fully understood and followed by every operator of this equipment. Review them frequently and NEVER TAKE CHANCES. BE CAREFUL BEFORE, DURING AND RIGHT AFTER USE OF ANY POWERED EQUIPMENT. ACCIDENTS CAN BE PREVENTED.

1. Know the controls and how to stop quickly. READ THE SAFETY AND OPERATION INSTRUCTION MANUAL.

2. Do not allow children to operate the vehicle. Do not allow adults to operate it without proper instruction.

3. Do not carry passengers. Keep children and pets a safe distance away.

4. Clear the work area of objects which might be picked up and thrown.

5. Disengage all the attachment clutches and shift into neutral before attempting to start the engine (motor).

6. Disengage power to attachment(s) and stop the engine (motor) before leaving the operator's position.

7. Disengage power to attachment(s) and stop the engine (motor) before making any repairs or adjustments.

8. Disengage power to attachment(s) when transporting or not in use.

9. Take all possible precautions when leaving the vehicle unattended, such as disengaging the power-take-off, lowering the attachment(s), shifting into neutral, setting the parking brake, stopping the engine, and removing the key.

10. Do not stop or start suddenly when going uphill or downhill. Mow up and down the face of steep slopes; never across the face.

11. Reduce speed on slopes and in sharp turns to prevent tipping or loss of control. Exercise extreme caution when changing direction on slopes.

12. Stay alert for holes in the terrain and other hidden hazards.

13. Watch out for traffic when crossing or near roadways.

14. When using any attachments, never direct discharge or material toward bystanders nor allow anyone near the vehicle while in operation.

15. Handle fuel with care - it is highly flammable.

a. Use approved fuel container.

b. Never remove the cap of the fuel or add fuel to a running or hot engine, or fill the fuel tank indoors. Wipe up spilled fuel.

## GENERAL SAFETY PRECAUTIONS (continued)

- c. Open doors if the engine is run in the garage - exhaust fumes are dangerous. Do not run the engine indoors.
16. Keep the vehicle and attachments in good operating condition, and keep safety devices in place.
17. Keep all nuts, bolts and screws tight to be sure the equipment is in safe working condition.
18. Never store the equipment with fuel in the tank inside a building where fumes may reach an open flame or spark. Allow the engine to cool before storing in any enclosure.
19. To reduce fire hazard, keep the engine free of grass, leaves, or excessive grease.
20. The vehicle and attachments should be stopped and inspected for damage after striking a foreign object, and the damage should be repaired before restarting and operating the equipment.
21. Do not change the engine governor settings or overspeed the engine.
22. When using the vehicle with mower, proceed as follows:
  - a. Mow only in daylight or in good artificial light.
  - b. Never make a cutting height adjustment while engine is running if the operator must dismount to do so.
  - c. Shut the engine off when unclogging chute.
  - d. Check the blade mounting bolts for proper tightness at frequent intervals.
23. Regard your mower as a piece of power equipment. Teach this to all who operate the equipment. Power equipment not properly operated can be very dangerous.
24. Be sure you know how to stop the mower and engine quickly, in case a child, another person, pet or object suddenly appears in the path of or dangerously close to unit.
25. When you mow on rough terrain, in high grass, the mower should be set at the highest cutting level to minimize possible ejection of debris.
26. Be alert at all times. Give complete and undivided attention to the job you are doing. This would minimize the possibility of getting into dangerous situations.
27. Use special care when mowing near objects to prevent the blades from striking them, as severe damage could result.
28. Never wear loose clothing when operating unit. It could become entangled in moving parts causing injury to the wearer.
29. Always wear substantial footwear and clothing to provide as much protection as possible.
30. Always follow manufacturer's operational suggestions for most efficient and safest operation of unit.
31. Always look back to be certain no one is in the way before using reverse. This will avoid the possibility of running over any children, persons or pets who might be in the area in back of the unit.

## IDENTIFICATION NUMBERS

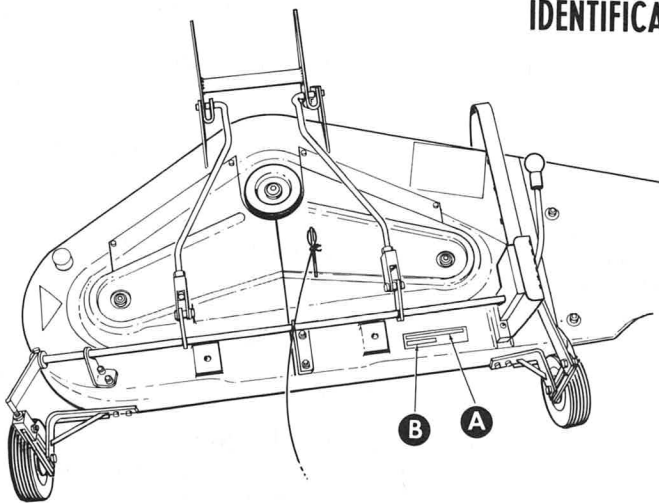


Figure 1

To ensure prompt service when repairs or adjustments are required, your Kubota Dealer must have the following information.

For your personal reference, fill in the spaces provided below.

Model Number (A) \_\_\_\_\_

Serial Number (B) \_\_\_\_\_

Date of Purchase \_\_\_\_\_

## IDENTIFICATION NUMBERS (continued)

Your Kubota Dealer has available a Parts List for your Unit. He can identify any parts you may require and furnish genuine factory replacements.



### CAUTION

WE URGE USING ONLY GENUINE KUBOTA FACTORY REPLACEMENT PARTS, WHICH

MEET ALL OF THE LATEST SAFETY REQUIREMENTS. REPLACEMENT PARTS MANUFACTURED BY OTHERS COULD PRESENT SAFETY HAZARDS EVEN THOUGH THEY MAY FIT ON KUBOTA PRODUCTS, ESPECIALLY ITEMS SUCH AS MOWER BLADES.

## ASSEMBLY

### INSTALLATION OF MOWER HEIGHT ADJUST LINKAGE

This mower is shipped partially assembled, to which the height adjustment linkage must be added.

THE INSTALLATION, MOUNTING AND ELECTRIC CLUTCH SECTIONS ARE BROKEN DOWN INTO SEPARATE SECTIONS, EACH WITH A FIGURE HEADING. THIS HAS BEEN DONE TO REFER YOU TO THAT FIGURE WHICH BEST ILLUSTRATES THE PARTS BEING DISCUSSED BELOW EACH OF THESE HEADINGS. FOLLOWING THIS PROCEDURE WILL EXPEDITE THE ASSEMBLY PROCEDURE.

#### FIGURE 12 (SEE PAGE 14-15)

Install left and right tie rods (1) and (2) through the holes in the drag link assembly (93), add flat washers (94), and secure with cotter pins (88). Turn the 5/8-11 hex nuts (90) and rod ends (89) on the tie rods and leave rods loose.

Insert the left end of the shaft assembly (3) through the left hand adjustment rod bracket (86), and attach the L.H. upper height adjust arm (4) with clevis (5) and (9) to the shaft assembly. Install the special washer (84) over the right end of the shaft assembly, followed by the lift quadrant (72), second special washer (84) and adjustment rod assembly (69) in that order.

#### FIGURE 2

Secure the lift quadrant assembly (72) to the mower base with two carriage bolts 5/16-18 x 5/8 (74).

Slide stud (69) of lift handle through lift quadrant at low cutting height slot.

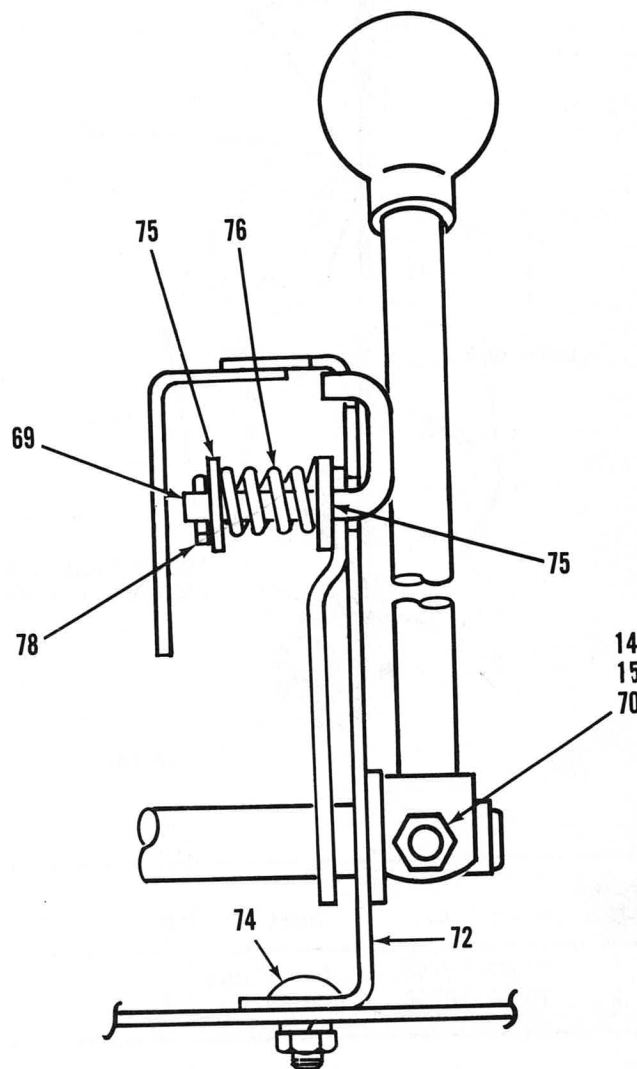


Figure 2

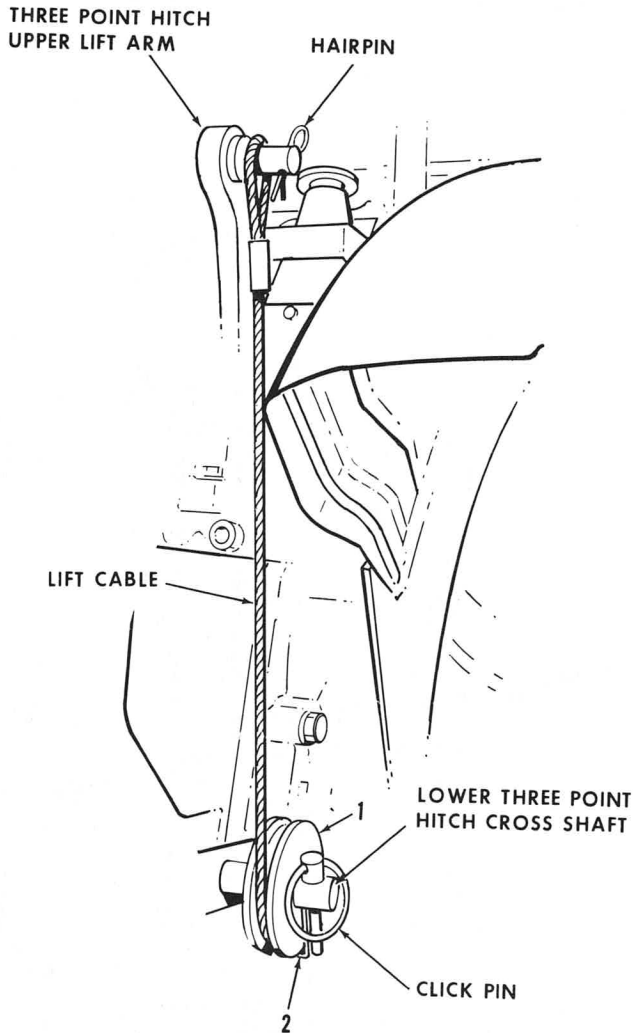
## ASSEMBLY (continued)

Slide washer (75), spring (76) and washer (75) over lift handle stud and secure with cotter pin (78).

Secure lift handle to height adjusting shaft with cap-screw (70), washer (15) and nut (14).

**FIGURE 12**

Install upper R. H. height adjust bracket (6).



| INDEX NO. | PART NO.    | DESCRIPTION   | QTY |
|-----------|-------------|---------------|-----|
| 1         | 70080-00750 | Pulley, Cable | 1   |
| 2         | 70080-00736 | Guide, Belt   | 1   |

**Figure 3**

Install the lower height adjust brackets (10) to the mower deck (the longer one on the left) and fasten with carriage bolts (17), lockwashers (13) and lock nuts (14) provided. Attach the adjustment plate assembly (8) to the outside of each of the upper lift arms (4) and (6), shafts pointing outward, with cap-screws and hwd. called out for each one.

**NOTE:** Do not clamp tight. Tighten each bolt just enough to allow the assembly to pivot. Place the slots in the adjustment plate assembly (18) over the holes on the lower height adjust brackets (9) and (10) and secure with washers (15), spacers (81), cap-screws (16) and nuts (14). Slip spacers (18) over the shaft at the bottom of the adjustment plate assembly and then put the gage wheels (11) on the shaft. Next put the washer (19) on the shaft (outboard of the gage wheel) and secure with snap rings (20).

## MOUNTING OF MOWER TO TRACTOR

### NOTE

Install the rear tractor wheels with the center hubs extending to the outside and the wheel offset to the inside.

The mower transport latch chain may be installed by hooking one end over the mower lift shaft assembly (item 3, Figure 12), and latching the other end in one of the holes in the right hand foot rest.

**FIGURE 3**

Remove the pointed set screw in the center of the tractor three point hitch lower cross shaft and slide the shaft as far as possible to the right. Remove the tractor three point hitch click pin on the right end of this shaft. Install the large bore solid pulley (1) on the right end of this shaft with the counter bore toward the inside. Place the cable guide over the end of the shaft and reinstall the tractor three point hitch click pin.

**FIGURE 4**

Install the 3/8 inch long spacer (5) on the shaft of the front cable lift bracket (1), and install the small bore solid pulley (4). Secure them with a hairpin provided.

Install the front cable lift bracket (1) on the right side of tractor under the parking brake lever using the two 14 mm x 1.25 pitch capscrews (2) with lockwashers (3) provided.

## ASSEMBLY (continued)

### FIGURE 5 AND 12

Remove the rear pins (87) of the mower tie rods (1) and (2) and adjust the length of the rods by turning the turnbuckle (89) in or out so that the total length, pin to pin, is about 20-1/2 inch.

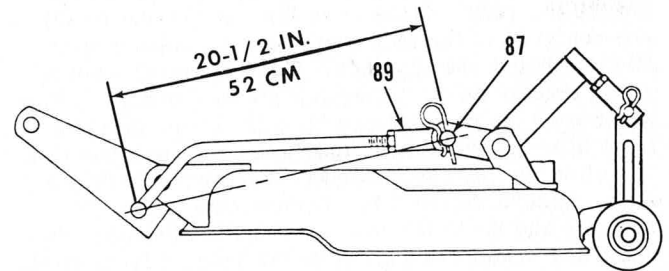


Figure 5

### FIGURE 6

Install the front hitch (1) on the tractor using the four plates (2), 4-1/2 inch long capscrews (3) with nuts (16), lockwashers (5) and flat washers provided,

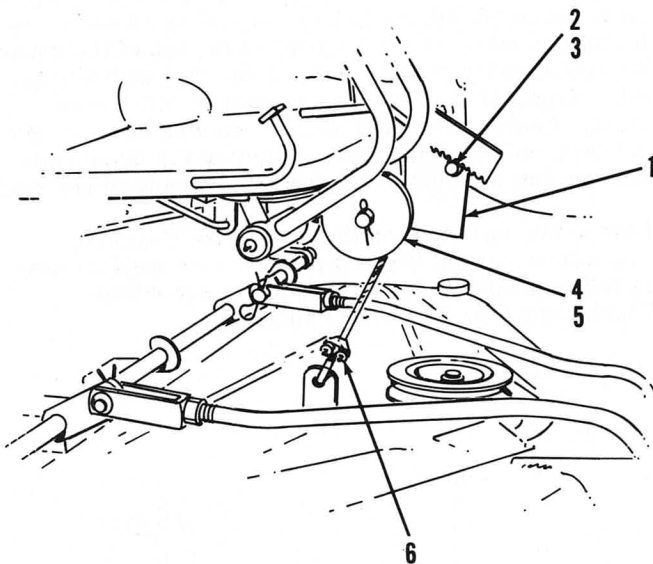


Figure 4

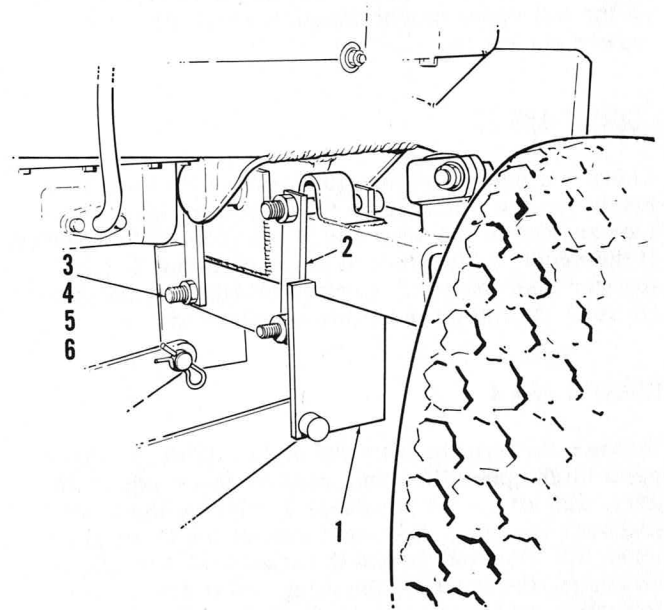


Figure 6

| INDEX NO. | PART NO.    | DESCRIPTION                         | QTY |
|-----------|-------------|-------------------------------------|-----|
| 1         | 70080-00626 | Bracket, Cable Lift                 | 1   |
| 2         | 70080-00627 | Screw, Cap Hex 16 mm x 1.25 x 25 mm | 2   |
| 3         | 70080-00628 | Washer, Lock, 16 mm                 | 2   |
| 4         | 70080-00629 | Pulley, Cable Lift (3/8 bore)       | 1   |
| 5         | 70080-00630 | Spacer                              | 1   |
| 6         | 70080-00631 | Clamp, Cable                        | 1   |

| INDEX NO. | PART NO.    | DESCRIPTION                      | QTY |
|-----------|-------------|----------------------------------|-----|
| 1         | 70080-00632 | Mounting Bracket, Front          | 1   |
| 2         | 70080-00633 | Strip                            | 4   |
| 3         | 70080-00634 | Screw, Cap Hex 1/2-13 unc x 4 lg | 4   |
| 4         | 70080-00635 | Washer, Flat 1/2 In. dia         | 8   |
| 5         | 70080-00636 | Washer, Flat 1/2 In. dia         | 4   |
| 6         | 70080-00637 | Nut, Hex 1/2-13 unc              | 4   |

## ASSEMBLY (continued)

making sure the mounting holes for the mower are toward the rear. Make sure the top capscrews (3) are centered in the axle loops and the bottom ones directly below the top ones. Turn the front wheels of the tractor as far to the left as they will go. With the mower tie rods (1) and (2) still loose, pull the front hitch on the mower (93) into a vertical position and slide the mower under the tractor from the right side. Secure the rear turnbuckles (89) of the tie rods (1) and (2) to the mower with the pins (87) provided and attach the mower to the tractor front hitch.

### FIGURE 12

Check the height of the rear of the mower from a flat surface to the deck on both sides. If this height is not equal on both sides, adjust the turnbuckle (5) on the left upper height adjust bracket (4) of the mower until it is.

### FIGURE 3 AND 12

Check the mower pitch adjustment by measuring the height from a flat surface to the bottom lip of the mower deck at the rear and at the front of the mower. If the height at the front of the deck is not  $\frac{3}{4}$  inch greater than the rear, shorten or lengthen the mower tie rods (1) and (2) until this is achieved.

### FIGURE 3 AND 4

Remove the hairpin from the end of the R.H. three point hitch upper lift arm, remove the vertical lift arm, and attach the lift cable by placing the looped end over the pin on the right side of the three point upper lift arm and thread the other end through, to and over, the front cable pulley and to the mower. Reinstall the three point hitch vertical lift arm and hairpin, thread the other end of the cable through the bracket on the mower, set the mower cutting height adjustment lever to its highest cutting position, position the tractor three point hitch to about 1-1/2 inches from its maximum height, fix the front three point hitch position stop clamp as far forward as it will go at this setting, stretch the cable tight, install and secure the cable calmp (6). Make sure the cable rides on the side of the transmission case and not under it. Move the mower height adjust arm to the lowest setting and bounce the mower two or three times to stretch the cable. Return the mower height adjust arm to the highest position.

Loosen the rear three point hitch position stop clamp and return the mower height adjust arm to the lowest position. With the mower at the lowest setting, pull up on the three point hitch upper lift arm and tighten the rear three point position clamp at this spot to tension the cable in the low cut position. Cut off the excess length of lift cable.

## ADJUSTMENT OF ELECTRIC CLUTCH INSTALLATION

Remove the plate on the front of the tractor covering the crankshaft pulley and store.

### FIGURE 7, 10 AND 11

Assemble the complete front PTO clutch assembly as shown in the diagram leaving all bolts loose enough so parts may be moved around. Slide clutch and housing assembly onto engine crankshaft. Install and tighten the bolts mounting the housing to the tractor front support.

By hand pressure alone, move the clutch (pulley portion) up as high as it will go and mark the location of the top of the round bearing housing on the mounting bracket with a pencil. Then again by hand pressure only, move the clutch (pulley portion) down as far as it will go and mark the location of the top of the round bearing housing on the mounting bracket with a pencil. Repeat this procedure for side to side movement. Center the round bearing housing between the extremes of the markings and tighten the three capscrews that hold the round bearing housing in position.

Center the coil plate on the face of the mounting bracket by moving the coil plate around until no drag is felt or heard when rotating the clutch pulley. Tighten the four capscrews securely.

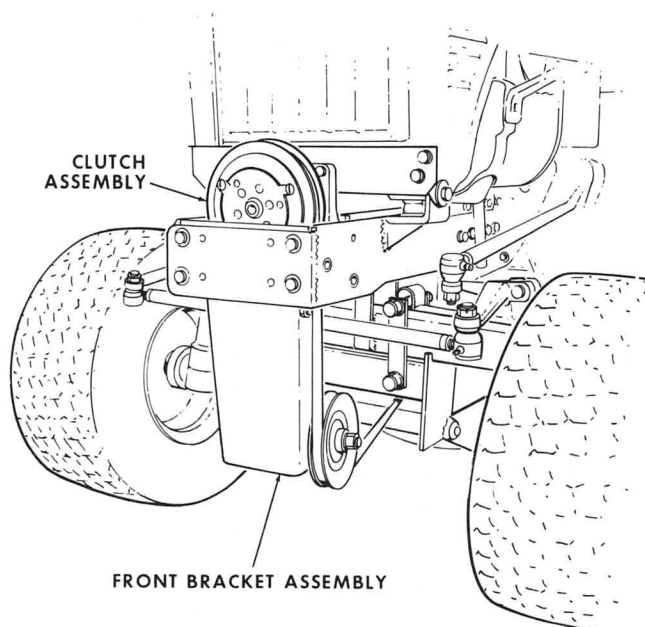


Figure 7

## BEFORE OPERATION

The operator should become familiar with the BEFORE OPERATION check list in the tractor SAFETY AND OPERATION INSTRUCTIONS and perform each check prior to starting and operating the Kubota tractor and mower attachment.

Before making test run:

- Be sure blade spindles are adequately greased.
- Recheck all nuts and bolts for tightness after initial run-in of two (2) to four (4) hours of operation.
- Regrease blade spindles every 100 hours of operation or more often if conditions dictate.



**CAUTION**

BEFORE USING MOWER REMOVE STONES, WIRE, ETC. FROM AREA TO BE MOWED. AVOID STRIKING PROTRUDING OBJECTS SUCH AS PIPES, ROOTS AND EARTH MOUNDS WITH CUTTING BLADES AS THIS COULD DAMAGE THE MOWER. NEVER PLACE HANDS OR FEET UNDER MOWER

BASE WHEN ENGINE IS RUNNING, OR ATTACHMENT DRIVE SWITCH IS IN "ON" POSITION. NEVER OPERATE MOWER WITH DISCHARGE CHUTE IN A RAISED POSITION TO HELP PREVENT POSSIBLE INJURY FROM DEBRIS.

Be sure mower is disengaged before attempting to start engine. Engage attachment drive at half throttle or below. Operate attachment at full throttle only.

### HEIGHT OF CUT

The cutting height is regulated by the gauge rollers. Raise the mower with attachment lift to adjust the height with the height adjustment lever. The attachment lift must be in the down position when mowing to allow the mower to float. When cutting tall grass or in questionable areas, it is advisable to cut at a higher level and in a lower speed range than on an average lawn since the power requirements are greater. The mower level can be raised for these conditions, with the attachment lift.

---

## OPERATION

Read the SAFETY AND OPERATION Instructions for your tractor before operating the mower attachment.

### MOWING TIPS

A beautiful rich lawn does not happen by accident. It takes time and hard work. There will be times when your grass is unusually tall and thick, like the spring of the year or when a vacation interrupts your cutting schedule. When this happens you can overload the mower, slowing down the cutting blades. Raise the cutting height and cut at a reduced ground speed. In a few days cut your lawn again at regular cutting height. For extremely heavy grass it is advisable to cut only 1/2 to 3/4 of the normal cutting width. This will reduce the load on the mower allowing the blades to maintain their cutting speeds providing a cleaner cut.

It is always better to lap your mower over the left wheel tracks of the previous cut. This will allow the mower to cut the grass that was tramped down by the wheels, reducing possibility of stripping.

Wherever possible, do not discharge the grass clippings into the uncut grass. If necessary, make one or two passes around the outside of the plot and then reverse the direction of the cut throwing the clippings over the cut portion. This allows the mower to cut cleaner and disperse the clippings more evenly.

It is best to avoid cutting wet grass which will form clumps giving the lawn an untidy look. If you have a choice, late afternoon is the ideal time for mowing because the grass is dry and the sensitive new cut grass is not exposed to the direct sun.

Do not cut your grass too short. Do not remove more than 1/3 of the leaf height during each cutting. If you cut too close you shock the grass and this results in a shallow root system, the greater the possibility of the grass dying out and turning brown.

During the hot dry season let your grass grow a little taller. This allows the roots to penetrate deeper and the longer grass helps keep the soil cool and moist.

## OPERATION (continued)

Always keep your cutting blades sharp. A dull blade shatters the leaf which reduces the healthy growth of your lawn.

### CONTROLS

There are three controls for operating the mower, the tractor PTO for engaging and disengaging the mower, the height adjustment lever and the tractor attachment lift lever to raise and lower the mower.

FOR MOST EFFICIENT CUTTING RESULTS  
ALWAYS MOW AT FULL THROTTLE.

The ground speed is controlled with the tractor transmission, not by changing engine speed. For heavy cutting or when engine begins to labor, the ground speed must be reduced.

THE MOWER MAY NOT CUT PROPERLY WHEN  
THE GROUND SPEED IS TOO HIGH. THE BLADE

SPEED DROPS DUE TO THE ENGINE LABORING  
OR THE ATTACHMENT BELTS ARE TOO LOOSE.

If the mower does not cut properly, check the following:

1. The tractor engine is not at full throttle or up to speed.
2. The ground speed is too fast for grass conditions.
3. Attachment belt too loose. Readjust attachment drive belt tension.
4. Mower not adjusted properly.

For transport, place the tractor attachment drive switch in "OFF" position and raise the mower to the highest position with tractor lift lever. Place the mower height adjusting lever in the transport position.

## MAINTENANCE

Your mower is equipped with a hose fitting insert which enables you to wash out the underside of your mower without removing it from the tractor. To attach hose, remove the plastic cap (C), Figure 8,

from the hose fitting. Attach hose, lower mower to its lowest cutting position, start tractor engine.

### NOTE

Be sure tractor transmission is in neutral and parking brake applied.

Engage mower blades, then turn water on full force for approximately 3 to 4 minutes. Shut off water and allow blades to continue running for several more minutes. This will air-dry the under side of the deck.

### NOTE

Always place attachment drive switch in the OFF position and stop the engine before disconnecting hose. Replace hose fitting cap after washing out deck.

Regularly check the complete unit for loose screws and nuts.

### LUBRICATION

There are three grease fittings on the mower: one on top of each blade spindle, see (D), Figure 8. Lubricate these grease fittings after every 100 hours of operation with multi-purpose grease and grease gun.

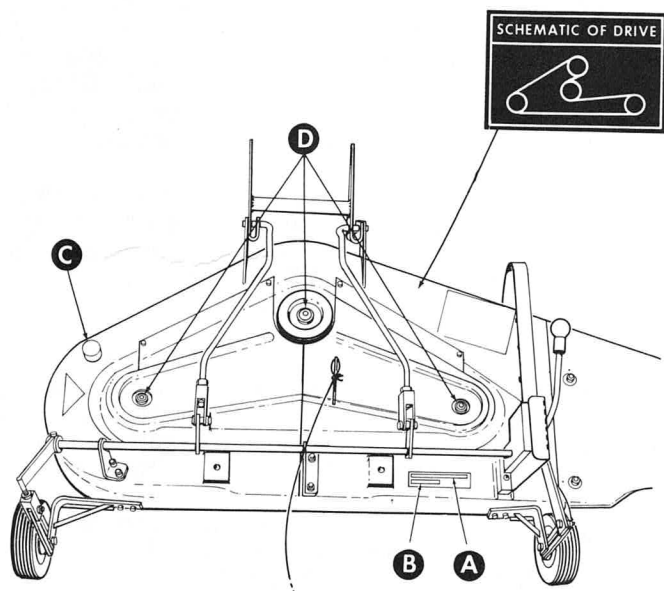


Figure 8

## MAINTENANCE (continued)

Frequently lubricate the linkage, gauge rollers and other pivot points with a few drops of lubricating oil, especially on mower after washing out.

### MOWER DRIVE BELT REPLACEMENT

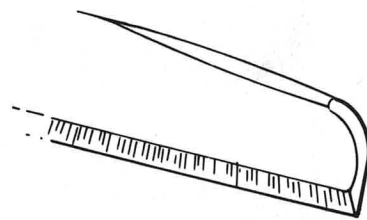
To replace mower drive belt remove the mower from the tractor. Remove the belt cover from the mower. Install new belt around sheaves as shown in Figure 8.

### CUTTING BLADES

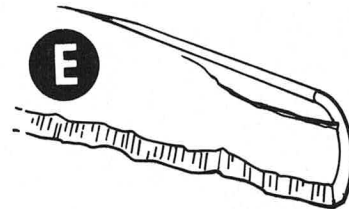
Periodically examine the ends of the mower blade(s) and the area between the turned up and flat portions on the top of the blade. When mowing grass in dry or sandy conditions, abrasive dust or sand particles wear away the metal connecting the flat and turned up portion of the blade. See (E), Figure 9. If a separation starts forming in the blade as shown in (F) the blade should be replaced. If the wear is allowed to continue the separation will enlarge allowing a portion of the blade to break off.

For efficient cutting, maintain sharp cutting edges on the blades at all times.

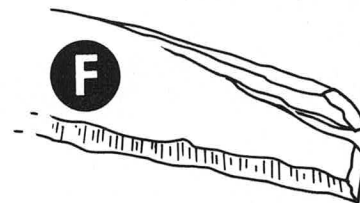
When sharpening blades, be sure to grind or file equal portions off both ends to maintain balance, as an unbalanced blade will cause excessive vibration. The blades should be checked on a blade balancer before reinstalling. The blades are identical and staggered for clearance so the position of individual blades is not important. **BE SURE THE BLADES ARE FASTENED SECURELY AT ALL TIMES. CHECK PERIODICALLY. TORQUE TO 25 FT. LBS (33.8 Nm).**



NEW BLADE



EARLY BLADE WEAR



DANGEROUS BLADE WEAR

Figure 9



## PARTS LIST

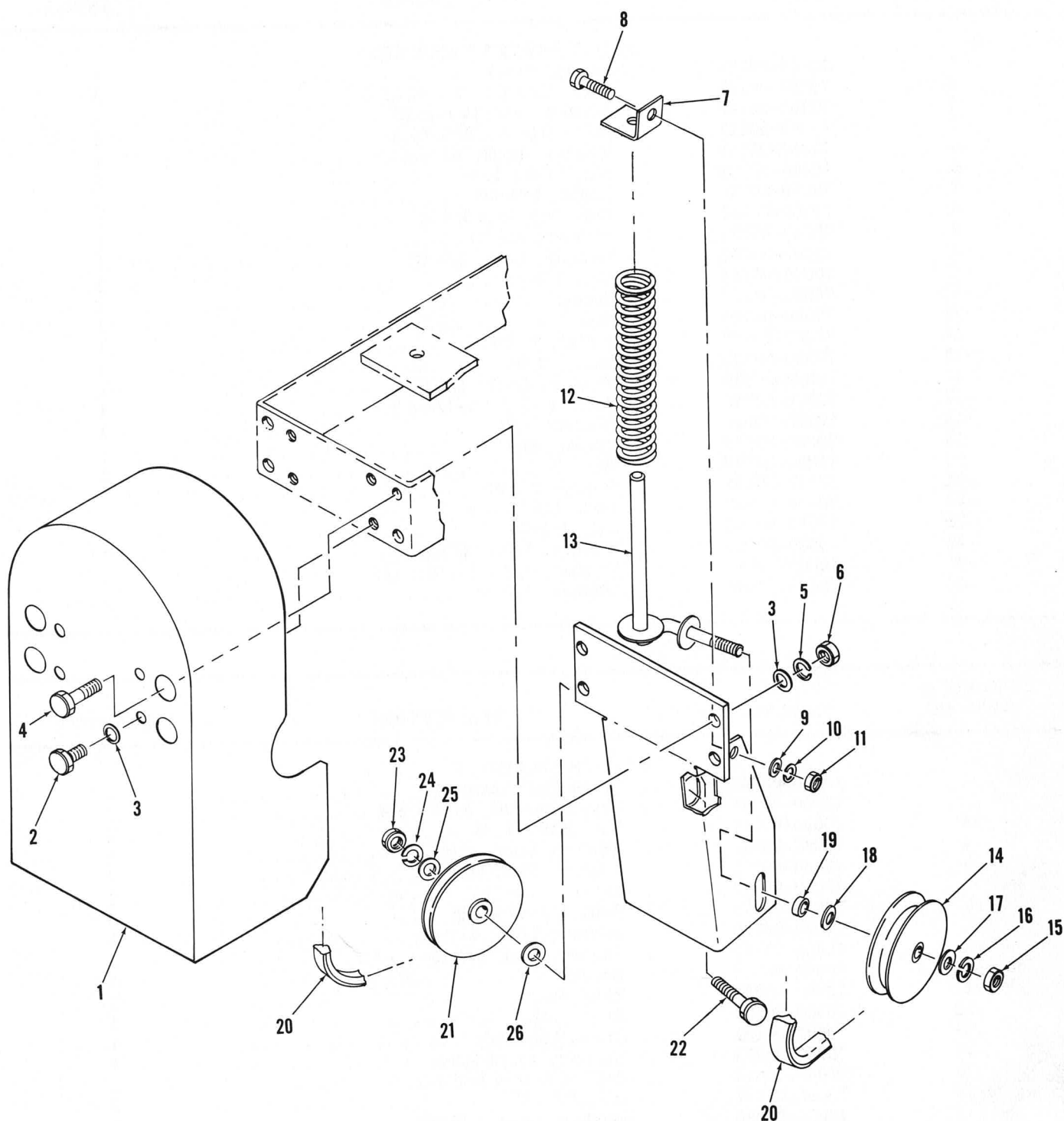


Figure 10. Front Bracket Assembly

# PARTS LIST (continued)

| FIGURE &<br>INDEX NO. | PART NO.    | DESCRIPTION                           | QUANTITY |
|-----------------------|-------------|---------------------------------------|----------|
| 10-                   |             | FRONT BRACKET ASSEMBLY                |          |
| -1                    | 70080-00724 | . Shield, Front . . . . .             | 1        |
| -2                    | 70080-00725 | . Bolt, M10 x 1.25 x 10 lg . . . . .  | 4        |
| -3                    | 70080-00726 | . Washer, Flat 10 mm ID . . . . .     | 8        |
| -4                    | 70080-00727 | . Bolt, M10 x 1.25 x 30 lg . . . . .  | 4        |
| -5                    | 70080-00728 | . Washer, Lock, 10 mm ID . . . . .    | 4        |
| -6                    | 70080-00729 | . Nut, M10 x 1.25 . . . . .           | 4        |
| -7                    | 70080-00730 | . Angle, Bracket . . . . .            | 1        |
| -8                    | 70080-00731 | . Bolt, 3/8-16 x 3/4 lg . . . . .     | 1        |
| -9                    | 70080-00732 | . Washer, 3/8 ID . . . . .            | 1        |
| -10                   | 70080-00738 | . Washer, Lock, 3/8 ID . . . . .      | 1        |
| -11                   | 70080-00744 | . Nut, 3/8-16 . . . . .               | 1        |
| -12                   | 70080-00734 | . Spring . . . . .                    | 1        |
| -13                   | 70080-00735 | . Rod . . . . .                       | 1        |
| -14                   | 70080-00748 | . Pulley, V-Belt, . . . . .           | 1        |
| -15                   | 70080-00736 | . Nut, 1/2-20 . . . . .               | 1        |
| -16                   | 70080-00636 | . Washer, Lock, 1/2 ID . . . . .      | 1        |
| -17                   | 70080-00745 | . Washer, 1/2 x 1-1/4 x 1/8 . . . . . | 1        |
| -18                   | 70080-00635 | . Washer, 1/2 . . . . .               | 1        |
| -19                   | 70080-00739 | . Spacer, Slot . . . . .              | 1        |
| -20                   | 70080-00740 | . Belt, V . . . . .                   | 1        |
| -21                   | 70080-00741 | . Pulley, V-Belt . . . . .            | 1        |
| -22                   | 70080-00742 | . Bolt, 1/2-20 x 2 lg . . . . .       | 1        |
| -23                   | 70080-00736 | . Nut, 1/2-20 . . . . .               | 1        |
| -24                   | 70080-00636 | . Washer, Lock, 1/2 ID . . . . .      | 1        |
| -25                   | 70080-00745 | . Washer, 1/2 x 1-1/4 x 1/8 . . . . . | 1        |
| -26                   | 70080-00636 | . Washer, 1/2 ID . . . . .            | 1        |

| FIGURE &<br>INDEX NO. | PART NO.    | DESCRIPTION                           | QUANTITY |
|-----------------------|-------------|---------------------------------------|----------|
| 11-                   |             | CLUTCH ASSEMBLY                       |          |
| -1                    | 70080-00743 | . Drive Shaft Assembly . . . . .      | 1        |
| -2                    | 70080-00746 | . Key, Woodruff, 5/32 x 3/4 . . . . . | 1        |
| -3                    | 70080-00747 | . Nut, M10 x 1.25 . . . . .           | 1        |
| -4                    | 70080-00752 | . Washer, Lock, M10 . . . . .         | 1        |
| -5                    | 70080-00753 | . Washer, Flat, M10 . . . . .         | 1        |
| -6                    | 70080-00632 | . Carrier, Bearing . . . . .          | 1        |
| -7                    | 70080-00733 | . Bolt, 3/8-16 x 1 lg . . . . .       | 3        |
| -8                    | 70080-00738 | . Washer, Lock, 3/8 ID . . . . .      | 3        |
| -9                    | 70080-00732 | . Washer, Flat, 3/8 ID . . . . .      | 3        |
| -10                   | 70080-00633 | . Bearing . . . . .                   | 1        |
| -11                   | 70080-00634 | . Ring, Snap . . . . .                | 1        |
| -12                   | 70080-00638 | . Ring, Snap . . . . .                | 1        |
| -13                   | 70090-00104 | . Clutch Assembly . . . . .           | 1        |
| -14                   | 70080-00639 | . Bracket, Front Drive . . . . .      | 1        |
| -15                   | 70080-00640 | . Bolt, 1/2-13 x 1-3/4 lg . . . . .   | 2        |
| -16                   | 70080-00637 | . Nut, 1/2-13 . . . . .               | 2        |
| -17                   | 70080-00636 | . Washer, Lock, 1/2 ID . . . . .      | 2        |
| -18                   | 70080-00641 | . Washer, 1/2 ID x 1-1/8 OD . . . . . | 2        |

## PARTS LIST (continued)

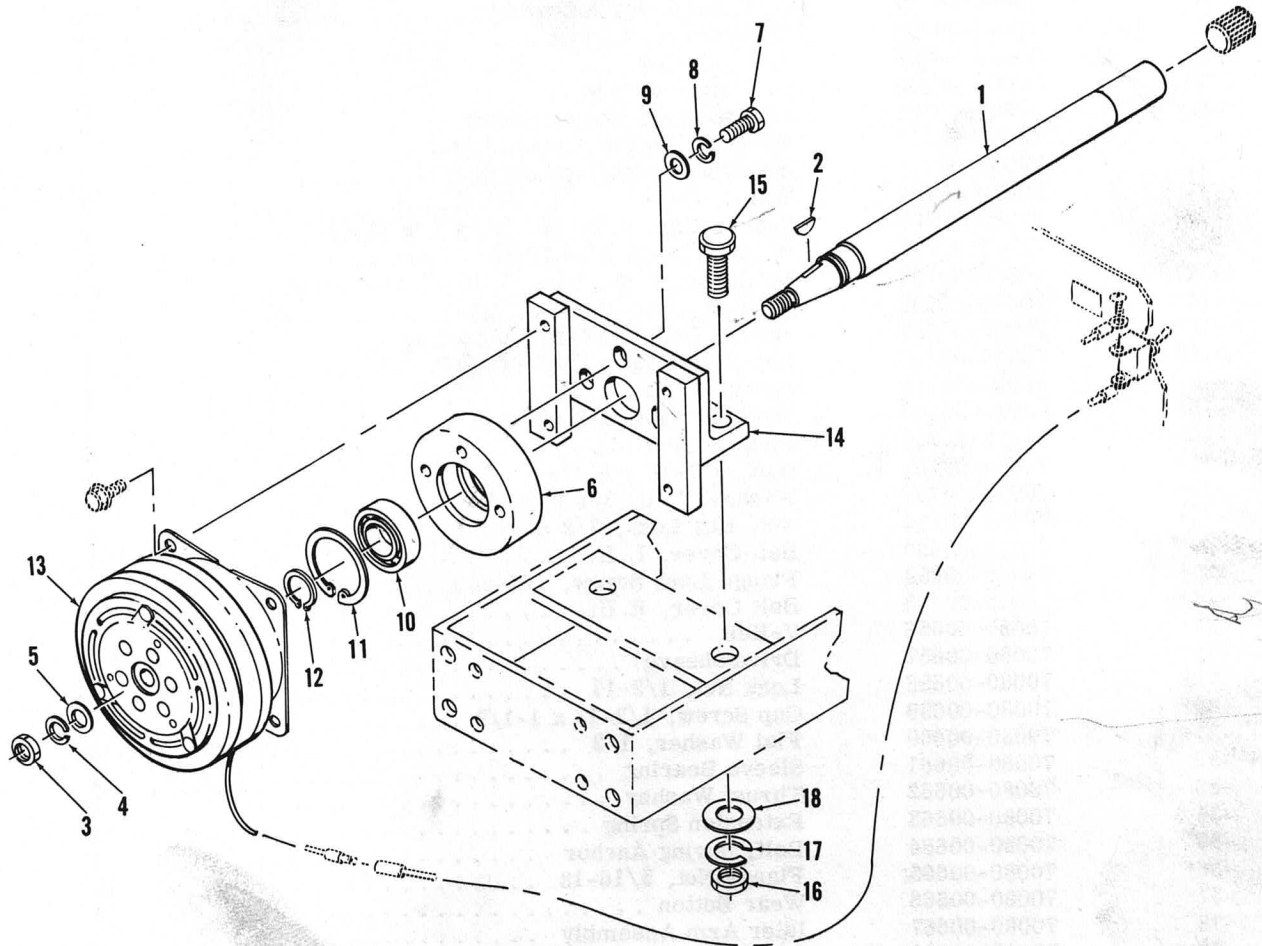


Figure 11. Clutch Assembly

# PARTS LIST (continued)

| FIGURE &<br>INDEX NO. | PART NO.    | DESCRIPTION                                 | QUANTITY |
|-----------------------|-------------|---|----------|
| 12-                   |             | MOWER ASSEMBLY                              |          |
| -1                    | 70080-00754 | Rod, Tie, R.H. ....                         | 1        |
| -2                    | 70080-00755 | Rod, Tie, L.H. ....                         | 1        |
| -3                    | 70080-00756 | Lift Shaft Assembly ....                    | 1        |
| -4                    | 70080-00757 | Arm Assembly Adjustable ....                | 1        |
| -5                    | 70080-00758 | Turnbuckle ....                             | 1        |
| -6                    | 70080-00759 | Arm, Roller ....                            | 1        |
| -7*                   | 70080-00760 | Nut, Hex, 5/8-18 ....                       | 1        |
| -8                    | 70080-00761 | Adjustment Plate Assembly ....              | 2        |
| -9                    | 70080-00762 | Bracket, Height Adjust, Right ....          | 1        |
| -10                   | 70080-00763 | Bracket, Height Adjust, Left ....           | 1        |
| -11                   | 70080-00764 | Wheel, Gage ....                            | 2        |
| -12*                  | 70080-00765 | Screw, Cap, 5/16-18 UNC x 2 lg (Typ) ....   | 3        |
| -13*                  | 70080-00766 | Washer, Lock 5/16 (Typ) ....                | 7        |
| -14*                  | 70080-00767 | Nut, Hex, Centerlock, 5/16-18 UNC (Typ) ... | 10       |
| -15*                  | 70080-00768 | Washer, Flat, 5/16 in. dia ....             | 7        |
| -16*                  | 70080-00769 | Screw, Cap, 5/16-18 UNC x 1 lg ....         | 3        |
| -17*                  | 70080-00770 | Bolt, Carriage, 5/16-18 x 3/4 ....          | 4        |
| -18                   | 70080-00771 | Spacer ....                                 | 2        |
| -19*                  | 04013-50400 | Washer, Flat, 1/2 in. dia ....              | 2        |
| -20*                  | 04612-00120 | Ring, Snap ....                             | 2        |
| -21*                  | 70080-00739 | Bolt, 3/8-16 x 1-3/4 ....                   | 1        |
| -22*                  | 70080-00732 | Washer, Flat, 3/8 inch dia ....             | 4        |
| -23*                  | 70080-00734 | Nut, Hex Lock, 3/8 inch dia ....            | 1        |
| -24                   | 70080-00653 | Belt Cover, L.H. ....                       | 1        |
| -25*                  | 70080-00654 | Flange Lock Screw, 1/4-20 x 1/2 ....        | 8        |
| -26                   | 70080-00655 | Belt Cover, R.H. ....                       | 1        |
| -27                   | 70080-00656 | V-Belt ....                                 | 1        |
| -28                   | 70080-00657 | Drive Sheave ....                           | 1        |
| -29*                  | 70080-00658 | Lock Nut, 1/2-13 ....                       | 1        |
| -30*                  | 70080-00659 | Cap Screw, 1/2-13 x 1-1/2 ....              | 1        |
| -31*                  | 70080-00660 | Flat Washer, 1/2 ....                       | 3        |
| -32                   | 70080-00661 | Sleeve Bearing ....                         | 1        |
| -33                   | 70080-00662 | Thrust Washer ....                          | 2        |
| -34                   | 70080-00663 | Extension Spring ....                       | 1        |
| -35                   | 70080-00664 | Bolt, Spring Anchor ....                    | 1        |
| -36*                  | 70080-00665 | Flange Nut, 5/16-18 ....                    | 15       |
| -37                   | 70080-00666 | Wear Button ....                            | 1        |
| -38                   | 70080-00667 | Idler Arm Assembly ....                     | 1        |
| -39                   | 70080-00668 | Idler Pulley ....                           | 1        |
| -40*                  | 70080-00669 | Hex Nut Jam, 1/2-20 ....                    | 1        |
| -41                   | 70080-00670 | Grease Fitting ....                         | 3        |
| -42*                  | 70080-00671 | Hex Nut, 3/4-16 ....                        | 3        |
| -43                   | 70080-00672 | Blade Sheave ....                           | 2        |
| -44*                  | 70080-00673 | Screw, Flange Lock, 5/16 x 18 x 3/4 ....    | 12       |
| -45*                  | 70080-00674 | Lock Washer, 5/16 ....                      | 14       |
| -46                   | 70080-00675 | Lift Bracket ....                           | 1        |
| -47                   | 70080-00676 | Decal (Belt Drive) ....                     | 1        |
| -48*                  | 70080-00677 | Carriage Bolt, 1/2-13 x 1-3/4 ....          | 2        |
| -49                   | 70080-00678 | Decal (Caution) ....                        | 1        |
| -50                   | 70080-00679 | Decal (Cut Line) ....                       | 1        |
| -51                   | 70080-00680 | Base Assembly ....                          | 1        |
| -52                   | 70080-00681 | Clipring, Ext. Ret. ....                    | 2        |
| -53                   | 70080-00682 | Hinge Rod ....                              | 1        |
| -54                   | 70080-00683 | Hinge Bracket ....                          | 1        |
| -55                   | 70080-00684 | Torsion Spring ....                         | 1        |

# PARTS LIST (continued)

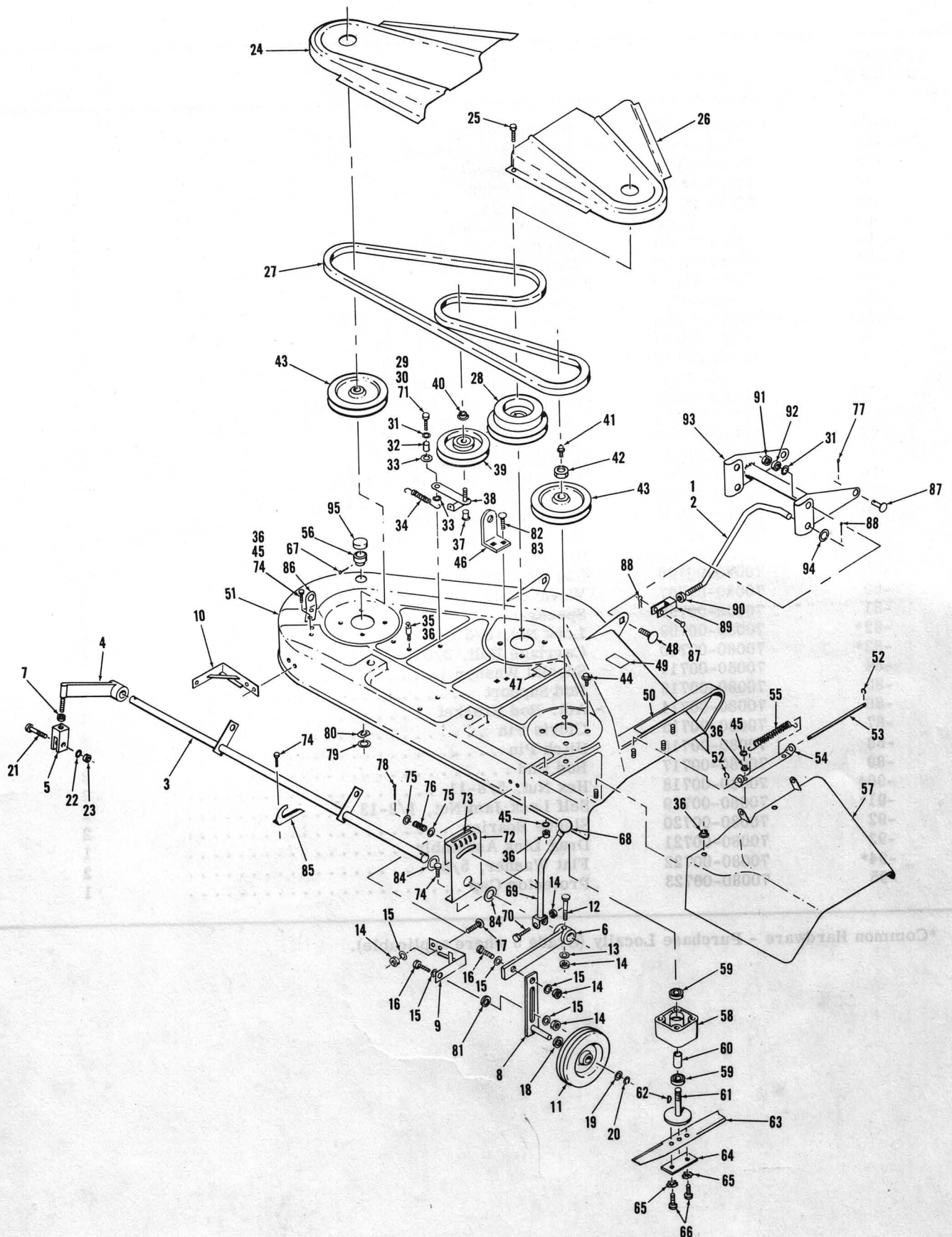


Figure 12. Mower Assembly

# PARTS LIST (continued)

| FIGURE &<br>INDEX NO. | PART NO.    | DESCRIPTION                              | QUANTITY |
|-----------------------|-------------|--|----------|
| 12-56                 | 70080-00685 | Washout Flange . . . . .                 | 1        |
| -57                   | 70080-00686 | Discharge Deflector . . . . .            | 1        |
| -58                   | 70080-00687 | Spindle Housing . . . . .                | 3        |
| -59                   | 70080-00688 | Ball Bearing . . . . .                   | 6        |
| -60                   | 70080-00689 | Spacer . . . . .                         | 3        |
| -61                   | 70080-00690 | Shaft Assembly . . . . .                 | 3        |
| -62                   | 70080-00691 | Woodruff Key, 3/16 x 3/4 . . . . .       | 3        |
| -63                   | 70080-00692 | Cutter Blade . . . . .                   | 3        |
| -64                   | 70080-00693 | Plate . . . . .                          | 3        |
| -65                   | 70080-00724 | Cotter Pin, 3/32 x 3/4 lg. . . . .       | 1        |
| -66*                  | 70080-00694 | Cap Screw, 3/8-24 x 1 . . . . .          | 6        |
| -67*                  | 70080-00695 | Cotter Pin, 1/8 x 1-1/2 . . . . .        | 1        |
| -68                   | 70080-00696 | Knob . . . . .                           | 1        |
| -69                   | 70080-00697 | Adjustment Rod Assembly . . . . .        | 1        |
| -70*                  | 70080-00698 | Screw, Hex Hd, 5/16-18 x 1-3/4 . . . . . | 1        |
| -71                   | 70080-00699 | Lock Washer, 1/2 . . . . .               | 1        |
| -72                   | 70080-00700 | Lift Quadrant . . . . .                  | 1        |
| -73                   | 70080-00701 | Decal (Cutting Ht. Adj.) . . . . .       | 1        |
| -74                   | 70080-00702 | Carriage Bolt, 5/16-18 x 3/4 . . . . .   | 9        |
| -75*                  | 70080-00703 | Flat Washer . . . . .                    | 3        |
| -76                   | 70080-00704 | Compression Spring . . . . .             | 1        |
| -77*                  | 70080-00705 | Cotter Pin, 1/8 x 1 lg . . . . .         | 2        |
| -78                   |             | Deleted                                  |          |
| -79                   | 70080-00706 | Thrust Washer . . . . .                  | 1        |
| -80                   | 70080-00707 | Wave Washer . . . . .                    | 1        |
| -81                   | 70080-00708 | Spacer . . . . .                         | 2        |
| -82*                  | 70080-00709 | Lock Nut, 3/8 x 16 . . . . .             | 3        |
| -83*                  | 70080-00710 | Carriage Bolt, 3/8-16 x 1 . . . . .      | 3        |
| -84                   | 70080-00711 | Special Washer . . . . .                 | 4        |
| -85                   | 70080-00713 | Rod Support . . . . .                    | 1        |
| -86                   | 70080-00714 | Adj. Rod Bracket . . . . .               | 1        |
| -87                   | 70080-00715 | Clevis Pin . . . . .                     | 4        |
| -88                   | 70080-00716 | Hitch Pin . . . . .                      | 4        |
| -89                   | 70080-00717 | Rod End . . . . .                        | 2        |
| -90*                  | 70080-00718 | Hex Nut, 5/8-11 . . . . .                | 2        |
| -91*                  | 70080-00719 | Self Lock Jam Nut, 1/2-13 . . . . .      | 2        |
| -92                   | 70080-00720 | Sleeve Bearing . . . . .                 | 2        |
| -93                   | 70080-00721 | Drag Link Assembly . . . . .             | 1        |
| -94*                  | 70080-00722 | Flat Washer, 5/8 . . . . .               | 2        |
| -95                   | 70080-00723 | Protector Cap . . . . .                  | 1        |

\*Common Hardware - Purchase Locally (Grade 5 where applicable).

