

Instructions for Parts Books

The heading at the top of the page will be the same for the picture of the parts at it is for the page with the part numbers.

Definition of column headings on part number pages:

REF.No → The number referring to the part on the picture page of the parts book.

Part No. → The number assigned to this part at the time of printing the parts book.

Description → Discription of part.

Q'ty → Quantity of part used on that page.

S.No. → Serial number range of the equipment that this part will fit.

>= Your serial number should be greater than or equal to the number shown.

<= Your serial number should be lesser than or equal to the serial number shown.

I/C → Interchangeability of part shown.

↔ The part shown will work for the older and later serial number.

The part shown is not interchangeable with the other serial number.

← new for old

→ old for new

Remarks → Notes about this particulart part. Sometimes this may say except [FR] or [CA]

Note about Country Codes:

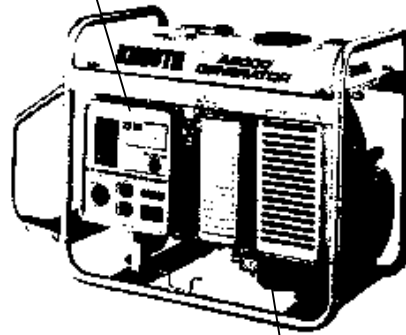
The parts books we use in the United States of America may also contain information about a part that would be different in another country. It is important that you are aware of the country codes in some instances.

Symbol	Country
A	United States of America
CA	Canada
FR	France
GR	Greece
PO	Portugal
AU	Australia

If the remarks column says for example EXCEPT [FR] this part works in all countries except France. That means it will work here in the USA.

ALL PRODUCT INDEX
A5000B-3-120-Y

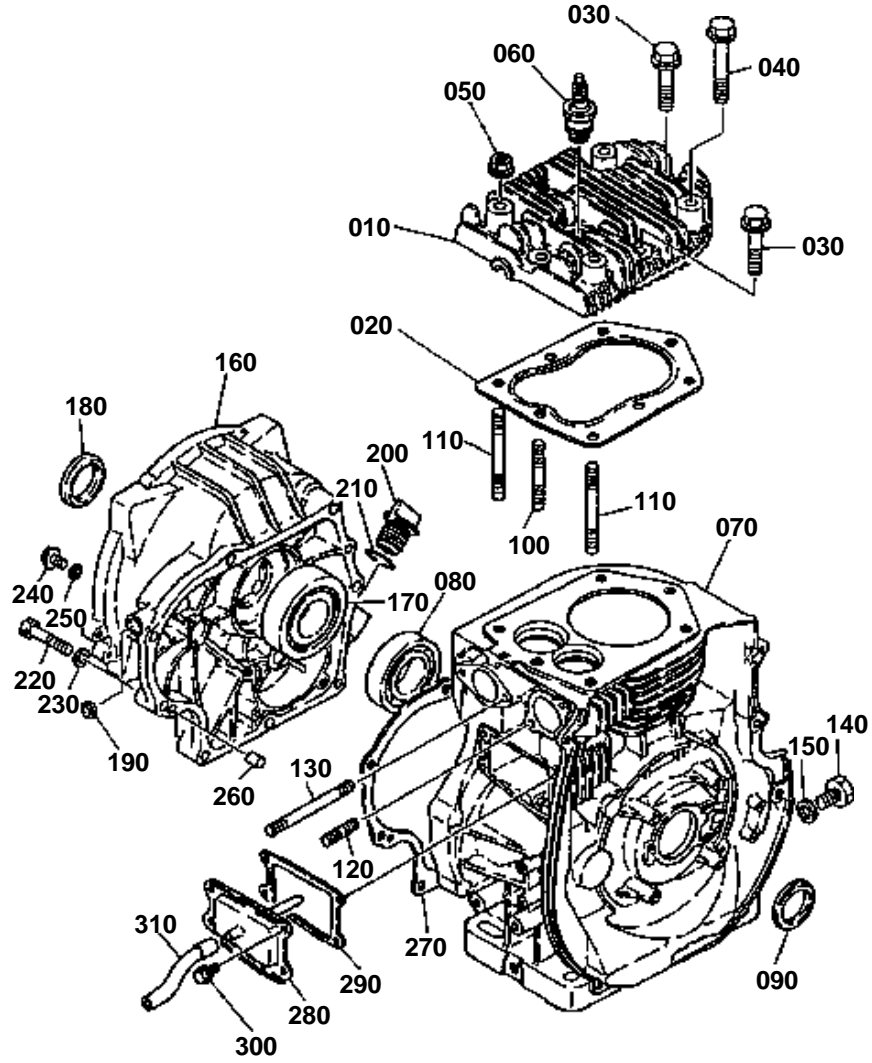
GENERATOR



ENGINE

Item	Part No.	Description	Book
ENGINE	01E001	CYLINDER HEAD	100K0631
	01E002	AIR CLEANER	100K0631
	01E003	MUFFLER	100K0631
	01E004	CAMSHAFT	100K0631
	01E005	PISTON AND CRANKSHAFT	100K0631
	01E006	CARBURETOR 1	100K0631
	01E008	GOVERNOR	100K0631
	01E009	RICOIL STARTER	100K0631
	01E010	MAGNETO	100K0631
	01E011	STARTER	100K0631
	GENERATOR	01E012	FRAME
01E013		GENERATOR	100K0631
01E014		CONTROL BOX 1	100K0631
01E016		FUEL TANK	100K0631
01E017		ATTACHED PARTS	100K0631
01E018		2 WHEEL [OPTION]	100K0631
01E019		4 WHEEL [OPTION]	100K0631
01E020		ACCESSORY	100K0631
01E021		SERVICE PARTS	100K0631

CYLINDER HEAD



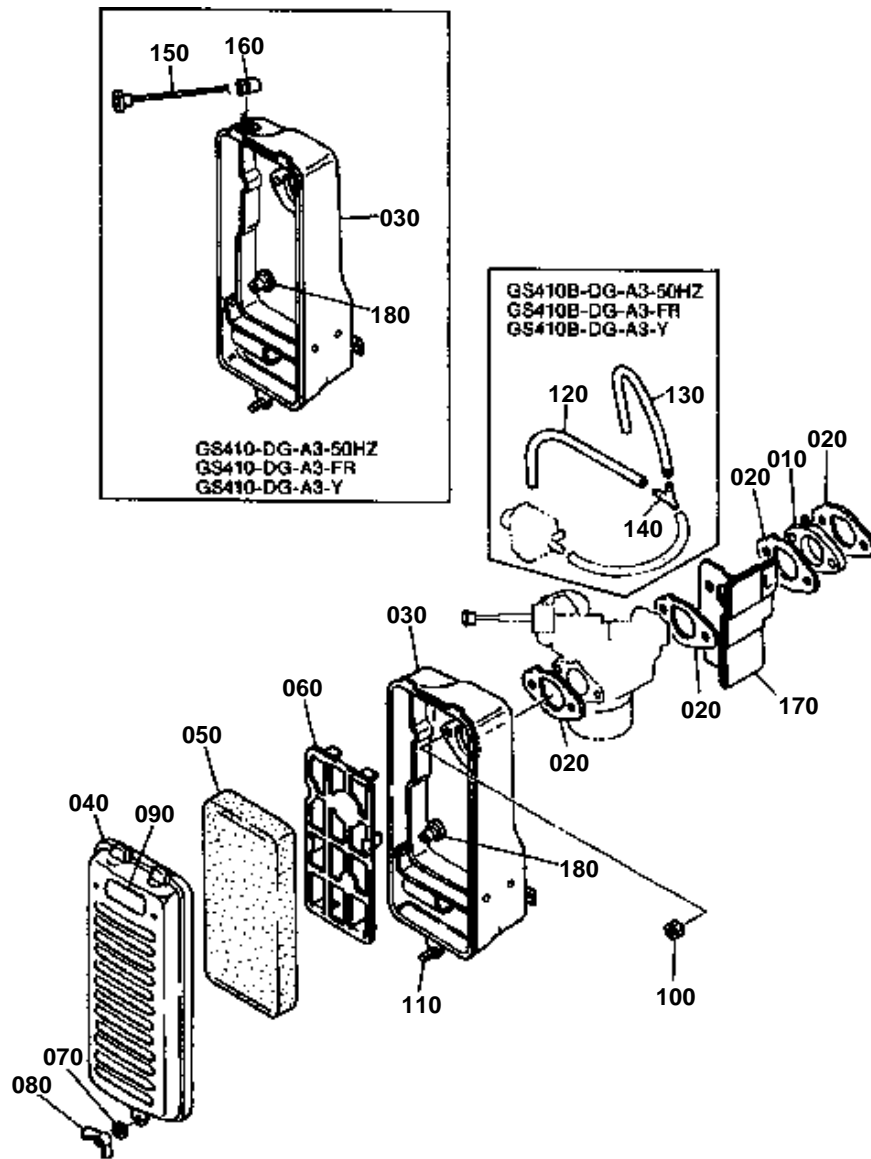


CYLINDER HEAD

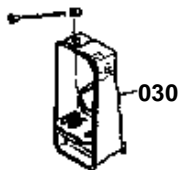
↔ Interchangeable; ≠ not interchangeable; ← new for old; → old for new

REF.No	Part No.	Description	Q'ty	S.No.	I/C	REMARKS	Weight (kgf)	Weight (lb)
010	12601-03110	CYLINDER HEAD	1				1.5	3.3
020	12601-03310	GASKET	1				0.05	0.11
030	01133-51050	BOLT	3				0.035	0.077
040	12601-91150	BOLT	2				0.05	0.11
050	02118-50100	NUT	3				0.005	0.011
060	12601-67710	PLUG	1				0.056	0.1232
070	12601-02110	CRANKCASE	1				8.01	17.622
080	12601-97050	BEARING	1				0.465	1.023
090	12601-04500	SEAL OIL	1				0.005	0.011
100	12601-91580	STUD	1				0.033	0.0726
110	12601-91590	STUD	2				0.05	0.11
120	01518-50820	STUD	2				0.012	0.0264
130	12601-91600	STUD	2				0.033	0.0726
140	01123-51220	BOLT	1				0	0
150	12601-00400	GASKET	1				0.001	0.0022
160	12601-01050	COVER CASE	1				2.2	4.84
170	12601-23360	BEARING	1				0.28	0.616
180	12601-04060	SEAL OIL	1				0.008	0.0176
190	12601-04070	SEAL OIL	1				0.015	0.033
200	12601-33140	PLUG	1				0.01	0.022
210	12601-45050	O RING	1				0.001	0.0022
220	01120-50840	BOLT	8				0	0
230	04012-50080	WASHER PLAIN	8				0.001	0.0022
240	12601-91230	BOLT	1				0.01	0.022
250	12601-01500	WASHER	1				0.001	0.0022
260	12601-94510	PIN DOWEL	2				0.004	0.0088
270	12601-01180	GASKET	1				0	0
280	12601-13810	COVER	1				0.12	0.264
290	12601-13820	GASKET	1				0	0
300	01023-50614	BOLT	4				0.005	0.011
310	12601-05510	PIPE	1				0.01	0.022

AIR CLEANER



REF.No. ①
CASE, AIR CLEANER
 CARTER
 12611-1115-0

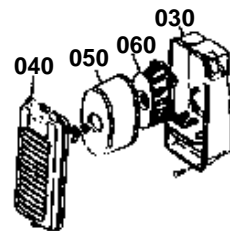


REF.No. ②
CASE, AIR CLEANER
 CARTER
 12601-1115-0

REF.No. ③
CAP, CLEANER CASE
 CHAPEAU
 12601-1118-0

REF.No. ④
ELEMENT, AIR CLEANER
 ELEMENT, FILTRE
 12601-1132-0

REF.No. ⑤
GUIDE
 GUIDE
 12601-1118-0

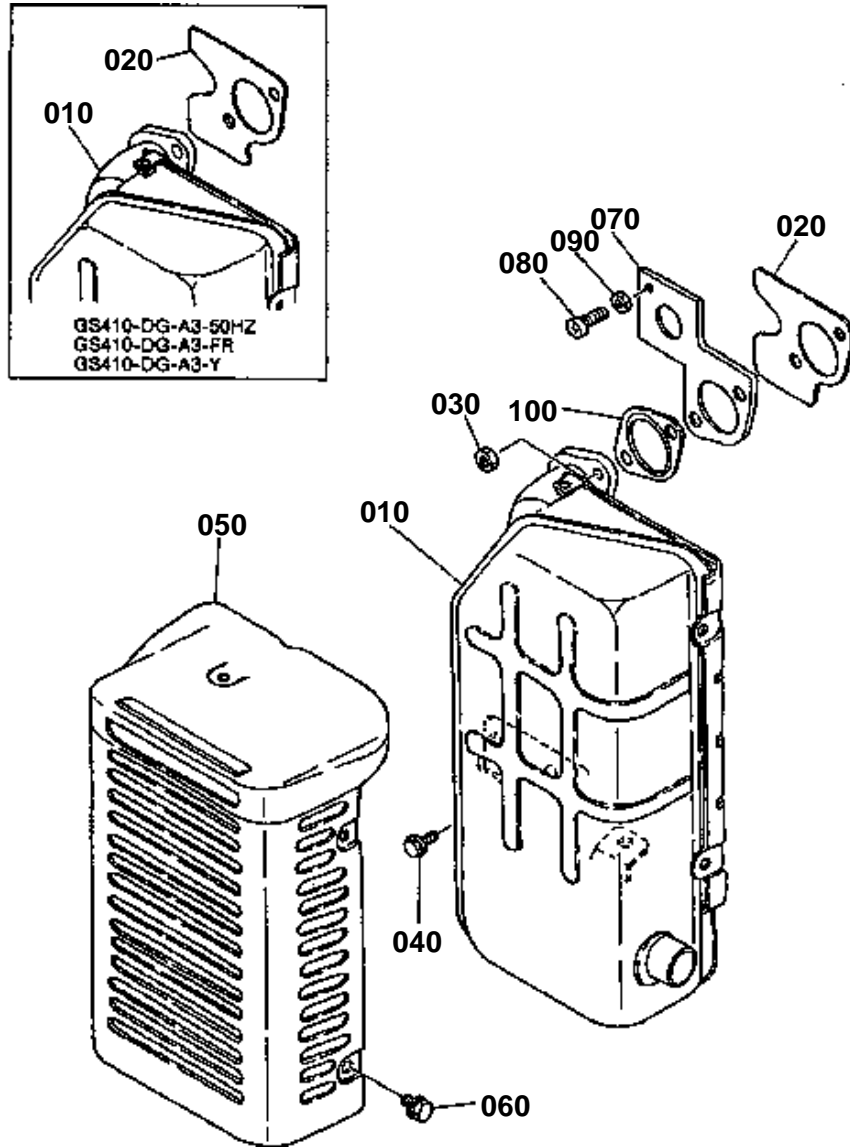


**AIR CLEANER**

↔ Interchangeable; ≠ not interchangeable; ← new for old; → old for new

REF.No	Part No.	Description	Q'ty	S.No.	I/C	REMARKS	Weight (kgf)	Weight (lb)
010	12601-46150	MANIFOLD INTAKE	1				0.017	0.0374
020	12601-46160	GASKET	4				0	0
030	12601-11150	CASE AIR CLEANER	1	<=701204			0.5	1.1
030	12601-11152	CASE AIR CLEANER	1	>=701205	≠		0.66	1.452
040	12601-11160	CAP CLEANER CASE	1	<=701204			0.28	0.616
040	12601-11162	CAP CLEANER CASE	1	>=701205	≠		0.328	0.7216
050	12601-11320	ELEMENT AIR CLEANER	1	<=701204			0.015	0.033
050	12601-11322	ELEMENT AIR CLEANER	1	>=701205	≠		0.03	0.066
060	12601-11180	GUIDE	1	<=701204			0.06	0.132
060	12601-11182	PLATE ELEMENT	1	>=701205	≠		0.054	0.1188
070	12601-94100	WASHER PLAIN	1				0.001	0.0022
080	02810-50060	NUT WING	1				0.009	0.0198
090	12601-88450	LABEL	1				0.001	0.0022
100	02114-50080	NUT	2				0.005	0.011
110	01123-50816	BOLT	1				0	0
120	12601-56260	HOSE	1				0.01	0.022
130	12601-56300	HOSE	1				0.01	0.022
140	12601-11430	WAY	1				0.001	0.0022
170	12601-44400	COVER CARB.	1				0.1	0.22
180	12601-67680	GROMMET	1	>=701205			0.001	0.0022

MUFFLER

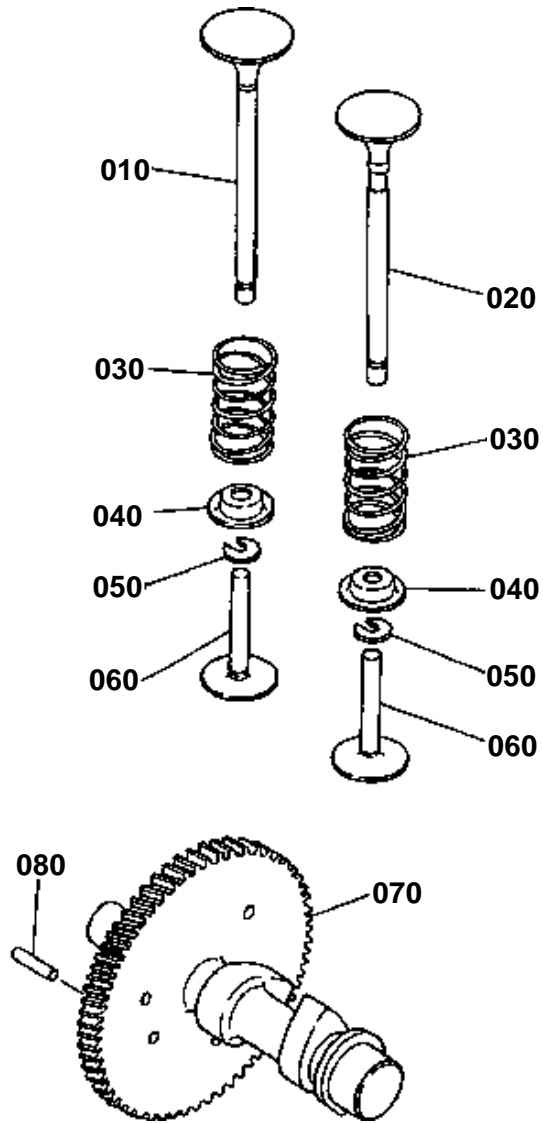


**MUFFLER**

↔ Interchangeable; ≠ not interchangeable; ← new for old; → old for new

REF.No	Part No.	Description	Q'ty	S.No.	I/C	REMARKS	Weight (kgf)	Weight (lb)
010	12603-12010	ASSY MUFFLER	1				3.48	7.656
020	12601-12230	GASKET	1				0	0
030	12601-92040	NUT	2				0.004	0.0088
040	01123-50816	BOLT	1				0	0
050	12601-12120	PROTECTOR	1				0.015	0.033
060	12601-91220	BOLT	4				0.003	0.0066
070	12601-12720	JOINT	1				0.04	0.088
080	03054-50520	SCREW PAN HEAD	1				0.005	0.011
090	02054-50050	NUT	1				0.002	0.0044
100	12601-12240	GASKET	1				0.005	0.011

CAMSHAFT



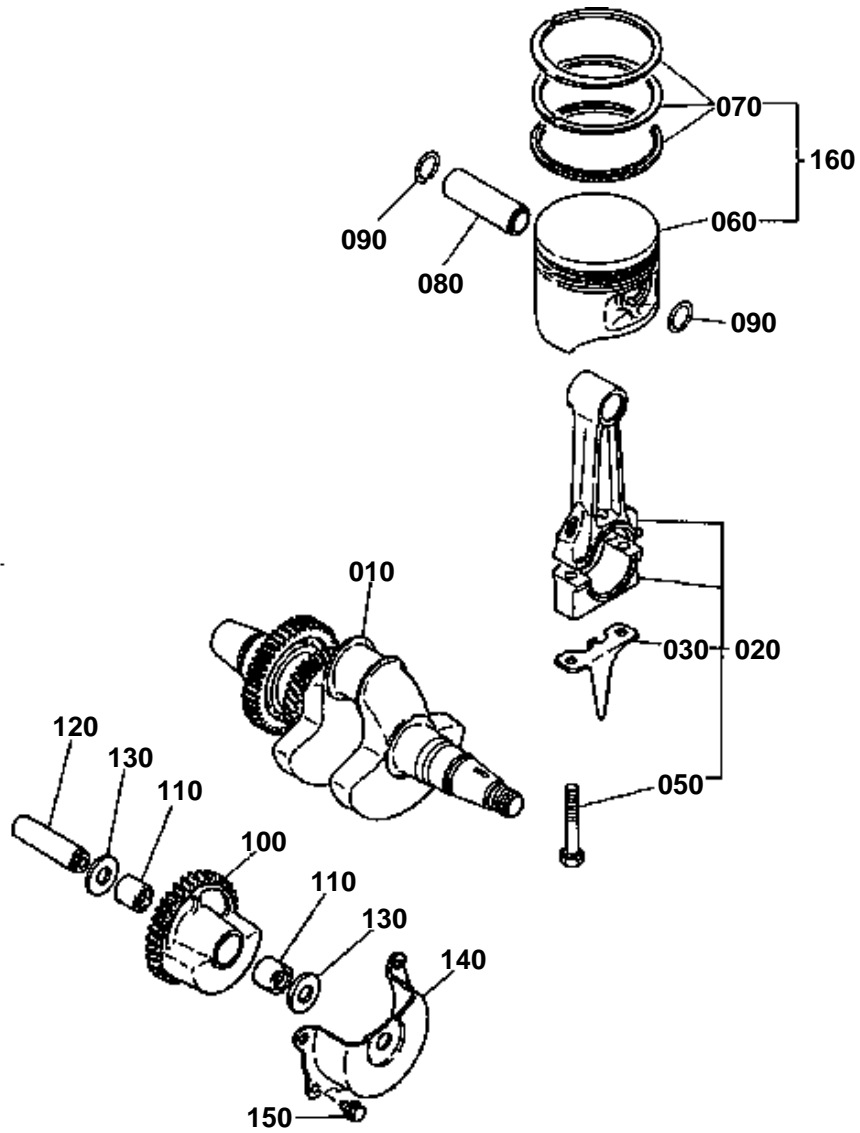


CAMSHAFT

↔ Interchangeable; ≠ not interchangeable; ← new for old; → old for new

REF.No	Part No.	Description	Q'ty	S.No.	I/C	REMARKS	Weight (kgf)	Weight (lb)
010	12601-13110	VALVE INLET	1				0.075	0.165
020	12601-13910	VALVE EXHAUST	1				0.07	0.154
030	12601-13240	SPRING	2				0.03	0.066
040	12601-13330	RETAINER VALVE	2				0.005	0.011
050	12601-13450	COOTER VALVE	2				0.001	0.0022
060	12601-15550	LIFTER VALVE	2				0.03	0.066
070	12601-16150	CAMSHAFT	1				1.17	2.574
080	12601-55450	PIN DOWEL	1				0.005	0.011

PISTON AND CRANKSHAFT



REF.No. 040
 WASHER, LOCK
 RONDELLE FREIN
 12601-2220-0



ABOLITION
 ABOLITION

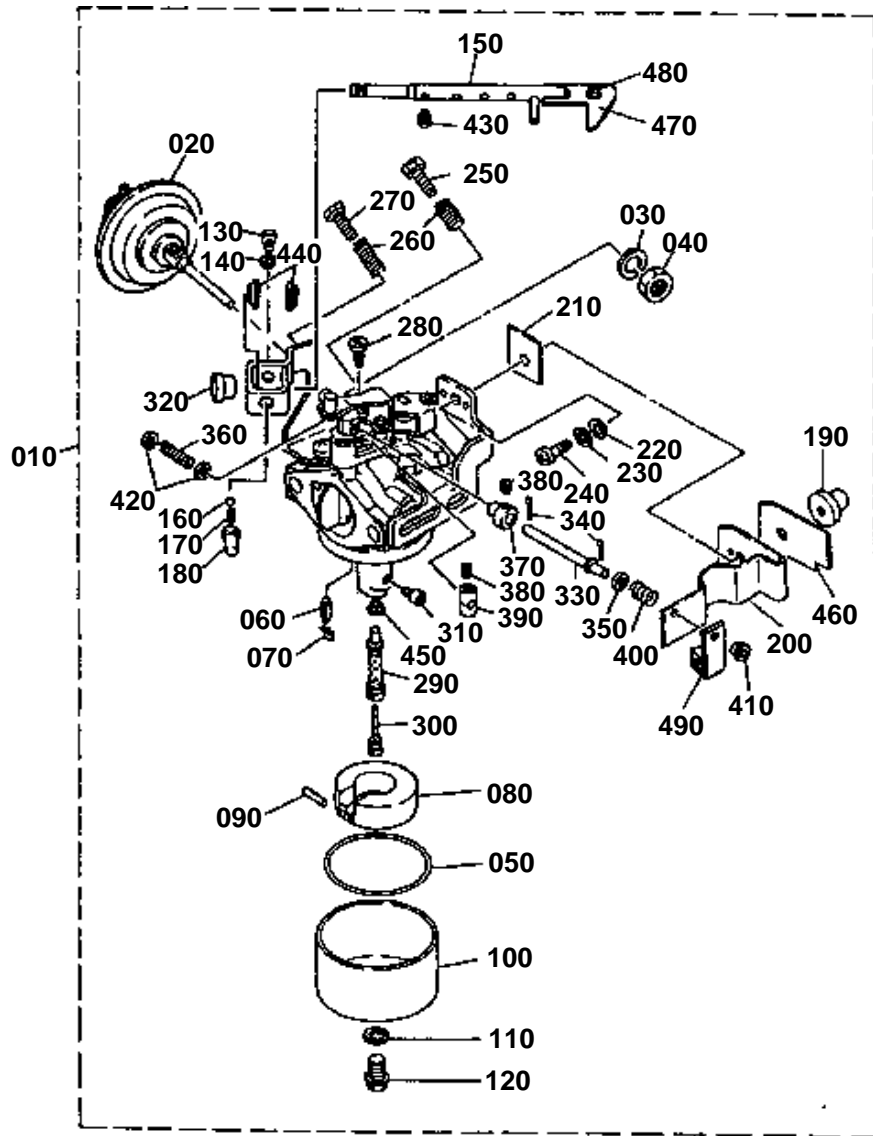


PISTON AND CRANKSHAFT

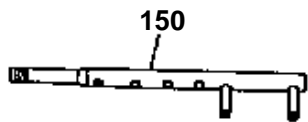
↔ Interchangeable; ≠ not interchangeable; ← new for old; → old for new

REF.No	Part No.	Description	Q'ty	S.No.	I/C	REMARKS	Weight (kgf)	Weight (lb)
010	12601-23110	CRANKSHAFT	1				4	8.8
020	12601-22110	CONNECTING ROD.	1				0.33	0.726
030	12601-22170	SPLASHER	1				0.02	0.044
040	12601-22200	WASHER LOCK	1	<=701539			0.005	0.011
050	12601-22140	BOLT	2				0.03	0.066
060	12601-21910	PISTON	1			STD	0.35	0.77
060	12601-21920	PISTON	1			O/S +0.25MM	0.35	0.77
060	12601-21950	PISTON	1			O/S +0.5MM	0.37	0.814
070	12601-21090	PISTON RING	1			STD	0.05	0.11
070	12601-21100	PISTON RING	1			O/S +0.25MM	0.052	0.1144
070	12601-21120	PISTON RING	1			O/S +0.5MM	0.05	0.11
080	12601-21310	PISTON PIN	1				0.07	0.154
090	12601-21330	CIR-CLIP	2				0.002	0.0044
100	12601-24110	GEAR CRANKSHAFT	1				0.69	1.518
110	12601-23370	BEARING	2				0.015	0.033
120	12601-23150	SHAFT	1				0.05	0.11
130	12601-94060	WASHER	2				0.003	0.0066
140	12601-23200	HOUSING	1				0.15	0.33
150	01023-50612	BOLT	4				0.005	0.011
160	12601-21060	ASSY PISTON	1			STD	0.5	1.1
160	12601-21070	ASSY PISTON	1			O/S +0.25MM	0.5	1.1
160	12601-21080	ASSY PISTON	1			O/S +0.5MM	0.5	1.1

CARBURETOR 1



REF.No. ①
SHAFT, CHOKE
AXE, STARTER
12601-5781-0

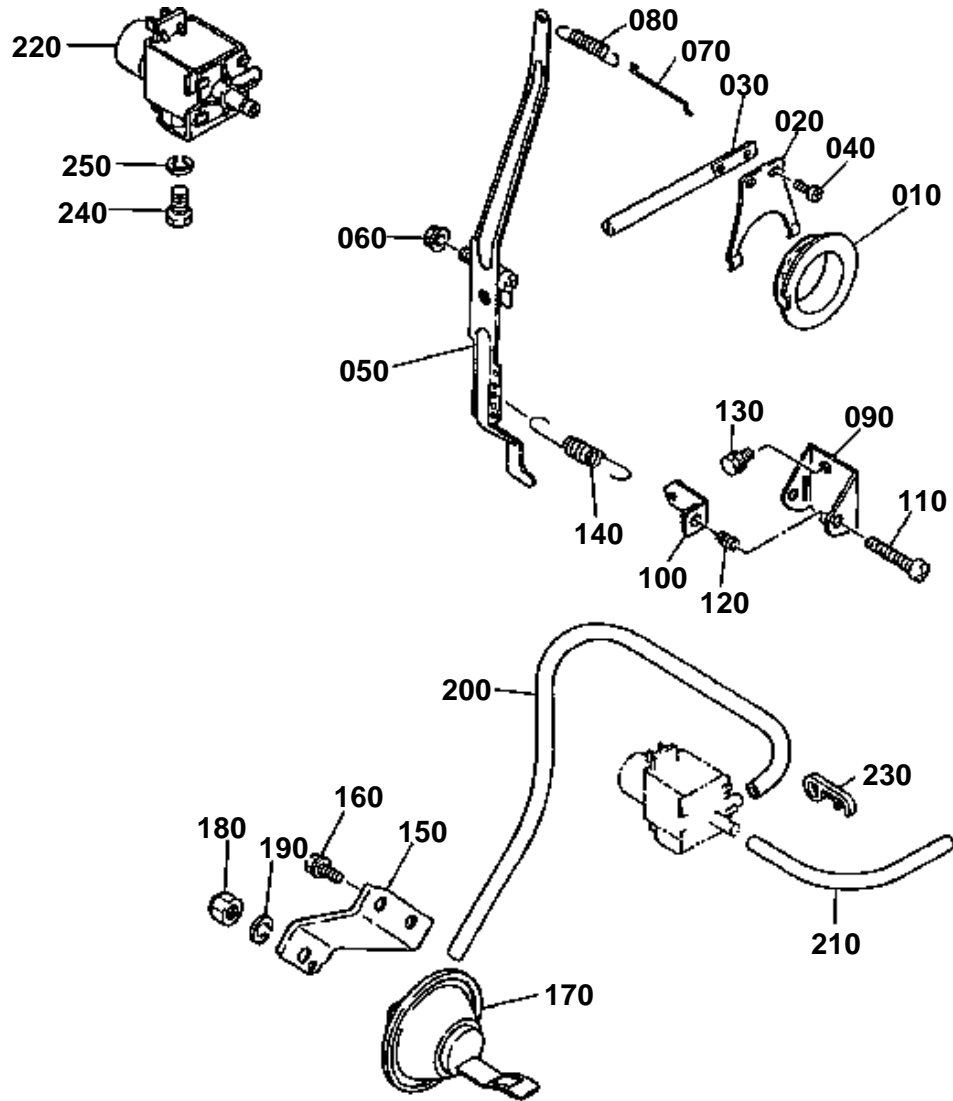


**CARBURETOR 1**

↔ Interchangeable; ≠ not interchangeable; ← new for old; → old for new

REF.No	Part No.	Description	Q'ty	S.No.	I/C	REMARKS	Weight (kgf)	Weight (lb)
010	12601-44010	ASSY CARBURETTOR	1	≤701060			0	0
010	12601-44012	ASSY CARBURETTOR	1	≥701061	≠		0.6	1.32
020	12601-44140	DIAPHRAGM	1				0.084	0.1848
030	04512-50080	WASHER SPRING	1				0	0
040	12601-92060	NUT	1				0.003	0.0066
050	12601-44740	GASKET	1				0.001	0.0022
060	12601-44840	NEEDLE	1				0.001	0.0022
070	12601-44860	CLIP	1				0.001	0.0022
080	12601-44710	FLOAT	1				0.05	0.11
090	12601-44780	PIN FLOAT	1				0.002	0.0044
100	12601-44730	BODU FLOAT	1				0.05	0.11
110	12601-44280	GASKET	1				0.002	0.0044
120	12601-44260	BOLT	1				0.01	0.022
130	12601-44900	GUIDE SCREW	1				0.002	0.0044
140	04512-50060	WASHER SPRING	1				0	0
150	12601-57810	SHAFT CHOKE	1	≤701060			0.02	0.044
150	12601-57812	SHAFT CHOKE	1	≥701061	≠		0.02	0.044
160	12601-97130	BALL	1				0.001	0.0022
170	12601-44810	SPRING	1				0.001	0.0022
180	12601-44360	HOLDER	1	≤701060			0.001	0.0022
180	12601-44362	HOLDER	1	≥701061	≠		0.001	0.0022
190	12601-44430	SPACER	1				0.005	0.011
200	12601-44600	PLATE	1				0.015	0.033
210	12601-44610	PLATE	1				0.001	0.0022
220	12601-44690	WASHER	1				0.002	0.0044
230	12601-44700	WASHER	1				0.002	0.0044
240	03054-50414	SCREW PAN HEAD	1				0.002	0.0044
250	12601-44580	ROD SCREW	1				0.003	0.0066
260	12601-44210	SPRING	2				0.001	0.0022
270	12601-44540	SCREW	1				0.002	0.0044
280	12601-44200	JET MAIN	1				0.003	0.0066
290	12601-44120	NOZZLE MAIN	1				0.002	0.0044
300	12601-44880	PIPE	1				0.005	0.011
310	12601-44110	JET MAIN	1				0.002	0.0044
320	12601-44440	CAP	1				0.003	0.0066
330	12601-44470	ROD A	1				0.005	0.011
340	12601-44480	COTTER PIN	2				0.001	0.0022
350	12601-44490	WASHER	1				0.002	0.0044
360	12601-44640	SPRING	1				0.002	0.0044
370	12601-44660	RING	1				0.002	0.0044
380	12601-44720	ROD SCREW	2				0.002	0.0044
390	12601-44680	BUSH	1				0.003	0.0066
400	12601-44620	SPRING	1				0.002	0.0044
410	12601-44670	RING	1				0.003	0.0066
420	12601-44790	WASHER	2				0.002	0.0044
430	12601-44800	SCREW	1				0.002	0.0044
440	12601-44370	HOLDER	2				0.001	0.0022
450	12601-44650	RING	1				0.002	0.0044
460	12601-44590	PLATE	1				0.001	0.0022
470	12601-44630	PLATE	1	≥701061			0.003	0.0066
480	12601-93340	SCREW	1	≥701061			0.01	0.022
490	12601-44550	PLATWE	1	≥701205			0.002	0.0044

GOVERNOR

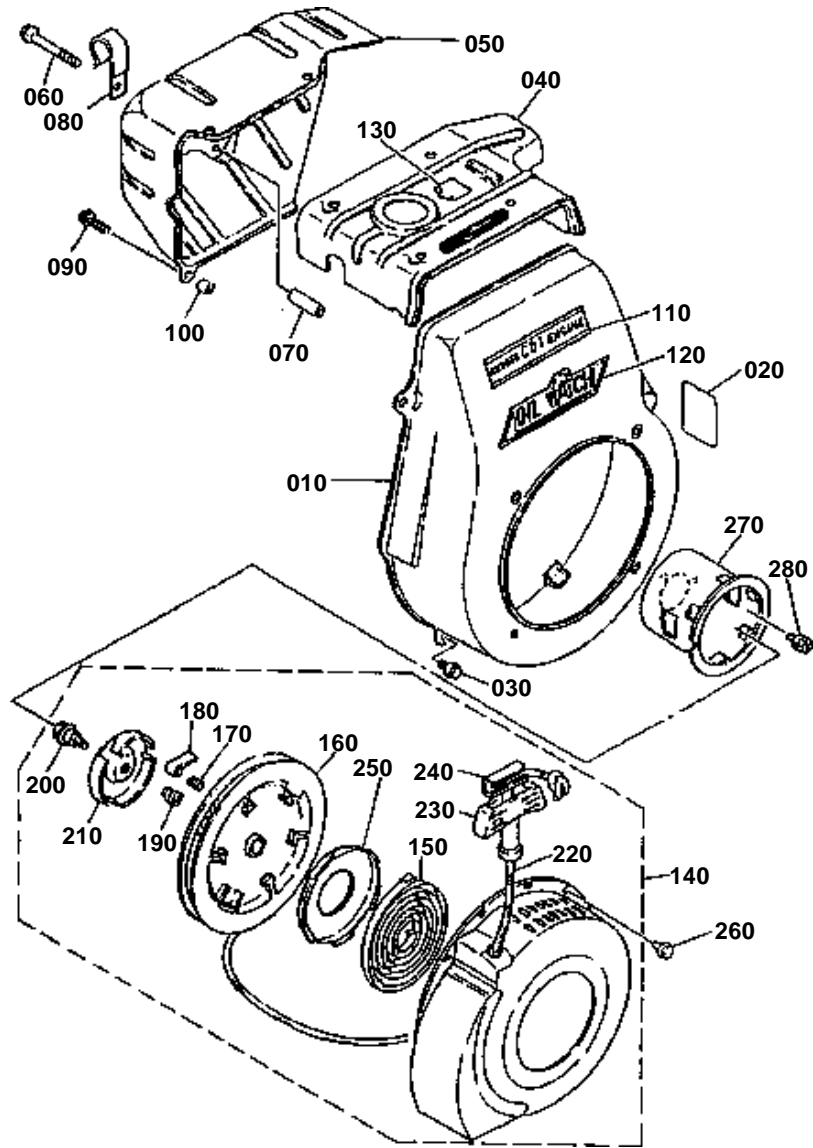


**GOVERNOR**

↔ Interchangeable; ≠ not interchangeable; ← new for old; → old for new

REF.No	Part No.	Description	Q'ty	S.No.	I/C	REMARKS	Weight (kgf)	Weight (lb)
010	12601-56050	COLLAR	1				0.04	0.088
020	12601-56190	FORK	1				0.02	0.044
030	12601-56140	SHAFT	1				0.04	0.088
040	03014-50608	SCREW PAN HEAD	2				0.002	0.0044
050	12601-56110	ARM GOVERNOR	1				0.09	0.198
060	02056-50060	NUT	1				0.002	0.0044
070	12601-56350	ROD LINK	1				0.002	0.0044
080	12601-56390	SPRING	1				0.002	0.0044
090	12601-57010	STAY	1				0.025	0.055
100	12601-57040	LEVER	1				0.01	0.022
110	03014-50635	SCREW PAN HEAD	1				0.008	0.0176
120	12601-56800	SPRING	1				0.001	0.0022
130	01023-50610	BOLT	1				0.005	0.011
140	12601-56830	SPRING	1				0.005	0.011
150	12601-57250	BRACKET	1				0.06	0.132
160	01023-50612	BOLT	2				0.005	0.011
170	12601-57300	DIAPHRAGM	1				0.11	0.242
180	02156-50080	NUT	1				0.004	0.0088
190	04512-50080	WASHER SPRING	1				0	0
200	12601-56250	HOSE	1				0.03	0.066
210	12601-56260	HOSE	1				0.01	0.022
220	17701-10520	SOLENOID	1				0.08	0.176
240	01020-50610	BOLT	1				0.005	0.011
250	17701-04910	WASHER SPRING	1				0.002	0.0044

RICOIL STARTER



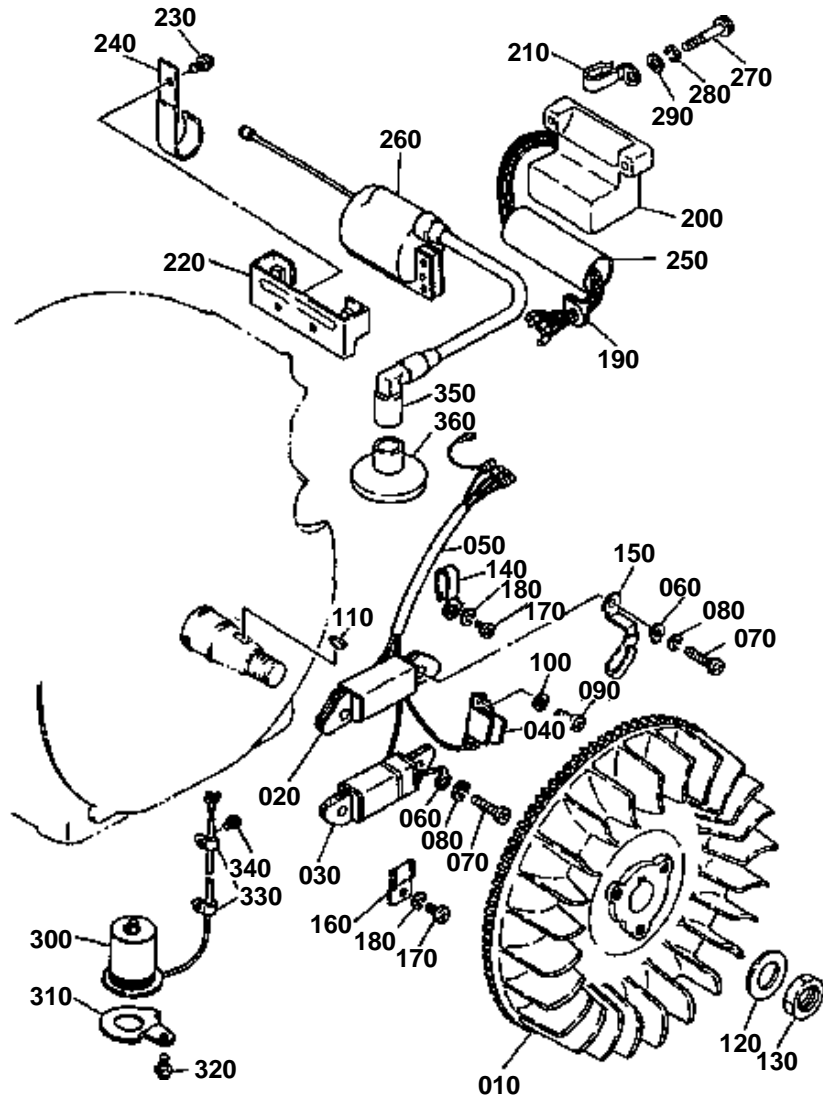


RICOIL STARTER

↔ Interchangeable; ≠ not interchangeable; ← new for old; → old for new

REF.No	Part No.	Description	Q'ty	S.No.	I/C	REMARKS	Weight (kgf)	Weight (lb)
010	12603-74050	COVER FAN CASE	1				0.9	1.98
020	12601-74250	ORNAMENT	1				0.001	0.0022
030	01023-50610	BOLT	4				0.005	0.011
040	12603-74480	SHROUD CYLINDER AIR	1				0.18	0.396
050	12603-74490	SHROUD CYLINDER AIR	1				0.28	0.616
060	12601-91160	BOLT	1				0.015	0.033
070	12601-74570	COLLAR	1				0.03	0.066
080	12601-67630	CLAMP	1				0.012	0.0264
090	03004-50620	SCREW	1				0.005	0.011
100	12601-74580	COLLAR	1				0.003	0.0066
110	13197-87160	LABEL KUBOTA ENGINE	1				0.001	0.0022
120	18529-88330	LABEL	1				0.002	0.0044
130	13376-88370	LABEL	1				0.001	0.0022
140	12603-61010	ASSY STARTER RECOIL	1	<=700388			0	0
140	12603-61012	ASSY STARTER RECOIL	1	>=700101	←		1.26	2.772
150	12601-61540	SPRING	1				0.122	0.2684
160	12601-61520	DRUM SHEAVE	1				0.15	0.33
170	12601-61630	CLIP	3				0.001	0.0022
180	12601-61530	PAWL	3				0.01	0.022
190	12601-61660	SPRING	1	<=700388			0	0
190	12601-61662	SPRING	1	>=700101	←		0.002	0.0044
200	12601-91170	BOLT	1				0.01	0.022
210	12601-61680	PLATE	1				0.06	0.132
220	12601-61650	ROPE STARTER	1				0.02	0.044
230	12601-61670	HANDLE	1				0.036	0.0792
240	12601-61710	CONNECTOR	1				0.01	0.022
250	12601-61690	CASE	1				0.02	0.044
260	01202-50608	BOLT	4				0.003	0.0066
270	12601-61740	PULLEY STARTER	1	<=700388			0.31	0.682
270	12601-61742	PULLEY STARTER	1	>=700101	←		0	0
280	01123-50814	BOLT	3				0	0

MAGNETO

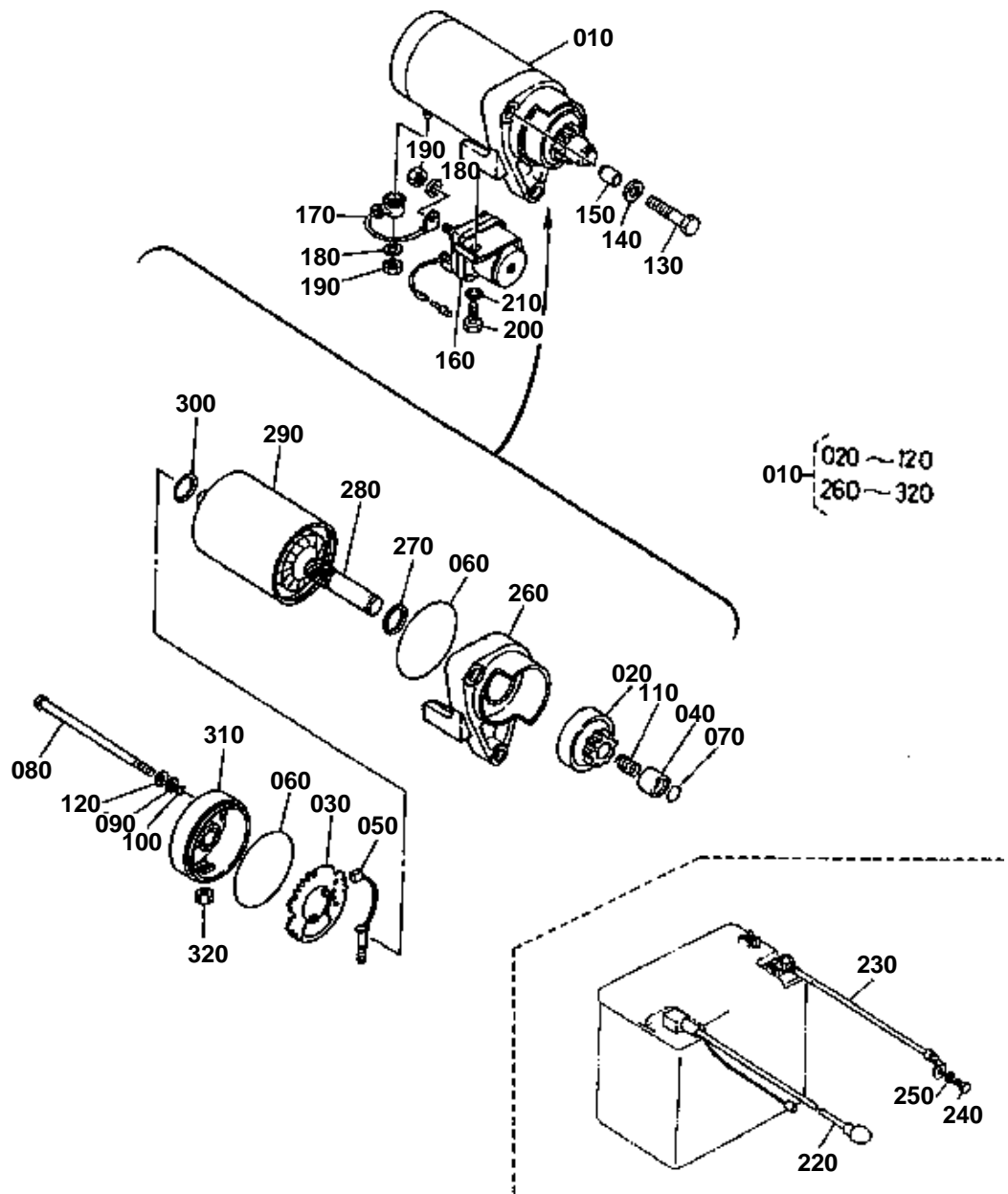


**MAGNETO**

↔ Interchangeable; ≠ not interchangeable; ← new for old; → old for new

REF.No	Part No.	Description	Q'ty	S.No.	I/C	REMARKS	Weight (kgf)	Weight (lb)
010	12601-67030	ROTOR	1				7	15.4
020	12601-67060	COIL CHARGE	1				0.19	0.418
030	12601-67110	COIL	1				0.19	0.418
040	12601-67250	COIL PULSER	1				0.02	0.044
050	12601-67910	CORD	1				0.02	0.044
060	12601-67860	TERMINAL	2				0.002	0.0044
070	03014-50625	SCREW PAN HEAD	4				0	0
080	17701-04910	WASHER SPRING	4				0.002	0.0044
090	03054-50410	SCREW PAN GEAD	2				0.001	0.0022
100	04512-50040	WASHER SPRING	2				0	0
110	12601-67890	KEY	1				0.003	0.0066
120	04013-50180	WASHER PLAIN	1				0.015	0.033
130	02174-50180	NUT	1				0.029	0.0638
140	12601-67590	CLAMP	1				0.005	0.011
150	12601-67570	CLAMP	1				0.005	0.011
160	12601-69740	CLAMP	1				0.03	0.066
170	03014-50610	SCREW PAN HEAD	2				0.002	0.0044
180	04512-50060	WASHER SPRING	2				0	0
190	12601-67700	GROMMET	1				0.003	0.0066
200	12601-67780	ASSY C.D.I.UNIT	1				0.12	0.264
210	12601-67540	CLAMP	1				0.005	0.011
220	12601-67280	BRACKET	1				0.08	0.176
230	01023-50610	BOLT	2				0.005	0.011
240	12601-67630	CLAMP	1				0.012	0.0264
250	12601-70140	COVER CONNECTOR	1				0.015	0.033
260	12601-67050	IGNITION	1				0.37	0.814
270	12601-91180	BOLT	2				0.01	0.022
280	04512-50060	WASHER SPRING	2				0	0
290	04013-50060	WASHER PLAIN	2				0	0
300	12601-05550	GAUGE OIL	1				0.06	0.132
310	12601-67610	CLAMP	1				0.015	0.033
320	12601-67930	BOLT	1				0.005	0.011
330	12601-67620	CLAMP	2				0.003	0.0066
340	12601-67930	BOLT	2				0.005	0.011
350	12601-67720	CAP PLUG	1				0.016	0.0352
360	12601-67730	PLUG	1				0.01	0.022

STARTER

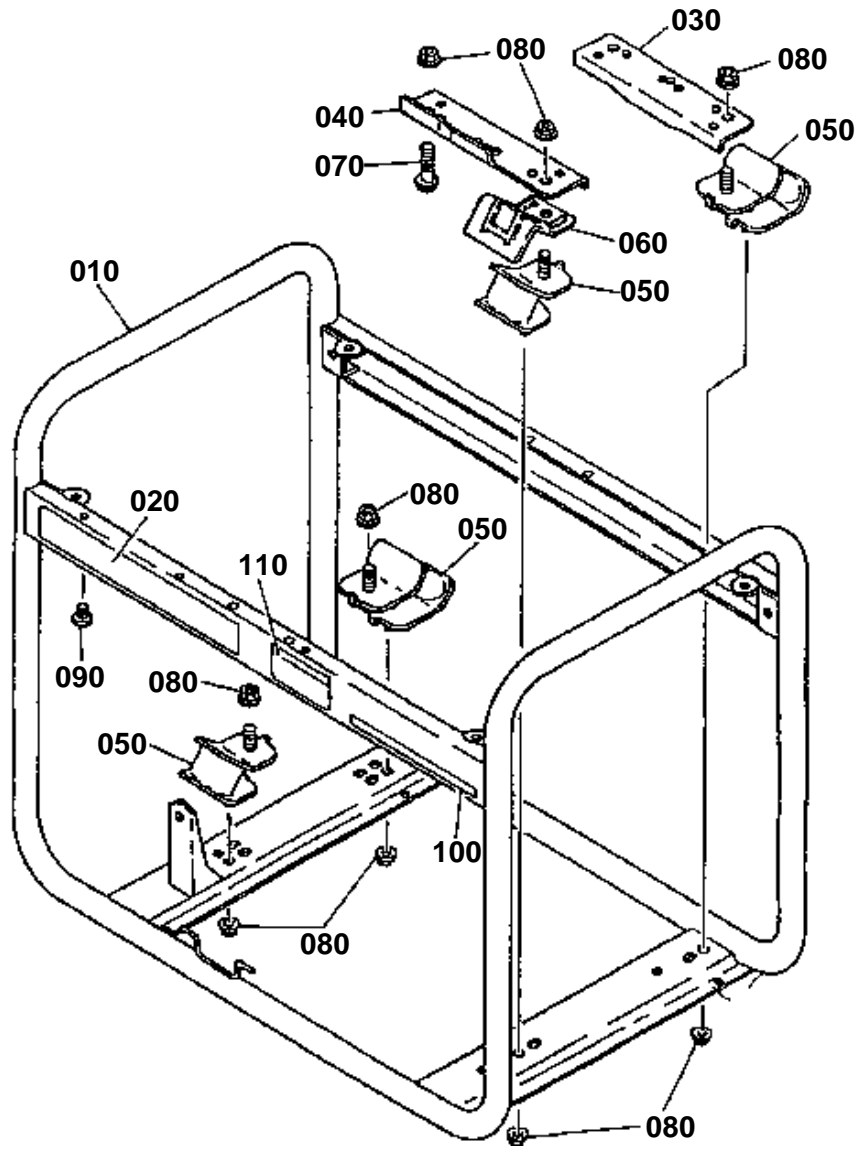


**STARTER**

↔ Interchangeable; ≠ not interchangeable; ← new for old; → old for new

REF.No	Part No.	Description	Q'ty	S.No.	I/C	REMARKS	Weight (kgf)	Weight (lb)
010	12601-60050	ASSY STARTER	1				2.04	4.488
020	12601-60100	CLUTCH	1				0.31	0.682
030	12601-60150	HOLDER BRUSH	1				0.03	0.066
040	12601-60190	RING STOP	1				0.02	0.044
050	12601-60160	BRUSH	1				0.01	0.022
060	12601-60170	GASKET	2				0.001	0.0022
070	12601-60200	RING	1				0.001	0.0022
080	12601-60350	BOLT	2				0.015	0.033
090	12601-60360	WASHER	2				0.003	0.0066
100	12601-60300	O RING	2				0.001	0.0022
110	12601-60370	LEVER SPRING	1				0.002	0.0044
120	12601-60380	WASHER	2				0.002	0.0044
130	01120-50840	BOLT	2				0	0
140	04012-50080	WASHER PLAIN	2				0.001	0.0022
150	12601-60390	PIN DOWEL	2				0.001	0.0022
160	12601-60450	SWITCH STARTER	1				0.21	0.462
170	12601-60460	WIRE STARTER	1				0.015	0.033
180	04512-50060	WASHER SPRING	3				0	0
190	02014-50060	NUT	3				0.002	0.0044
200	01202-50616	BOLT	1				0.006	0.0132
210	04512-50060	WASHER SPRING	1				0	0
220	17701-10500	WIRE	1				0.1	0.22
230	17701-10510	WIRE	1				0.07	0.154
240	01020-50610	BOLT	1				0.005	0.011
250	17722-94110	WASHER PLAIN	1				0.003	0.0066
260	12601-63030	ASSY HOUSING	1				0.67	1.474
270	12601-63440	WASHER PLAIN	1				0.003	0.0066
280	12601-67070	ASSY ARMATURE	1				0.9	1.98
290	12601-63080	ASSY YOKE	1				0.25	0.55
300	12601-63430	WASHER PLAIN	1				0.002	0.0044
310	12601-63200	ASSY FRAME	1				0.1	0.22
320	12601-63110	NUT	1				0.005	0.011

FRAME

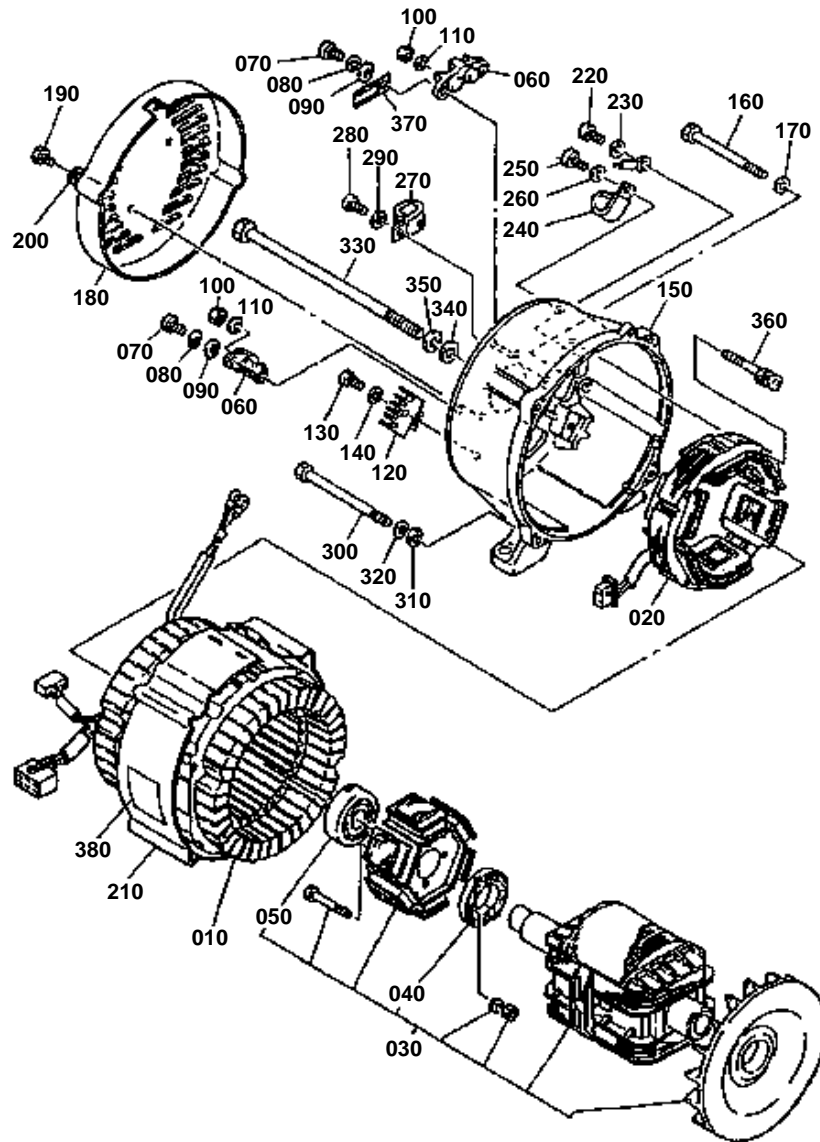


**FRAME**

↔ Interchangeable; ≠ not interchangeable; ← new for old; → old for new

REF.No	Part No.	Description	Q'ty	S.No.	I/C	REMARKS	Weight (kgf)	Weight (lb)
010	17701-01010	ASSY FRAME	1				5.5	12.1
020	17701-88550	INDICATOR	1				0.005	0.011
030	17701-01250	BRACKET	1				0.3	0.66
040	17701-01710	BRACKET	1				0.313	0.6886
050	17701-01270	INSULATOR	4				0.22	0.484
060	17701-01280	PROTECTOR	1				0.04	0.088
070	01130-51040	BOLT	4				0	0
080	02118-50100	NUT	12				0.005	0.011
090	01202-50610	BOLT	2				0.004	0.0088
100	17701-88060	LABEL	1				0.001	0.0022
110	17701-88280	INDICATOR	1				0.002	0.0044

GENERATOR



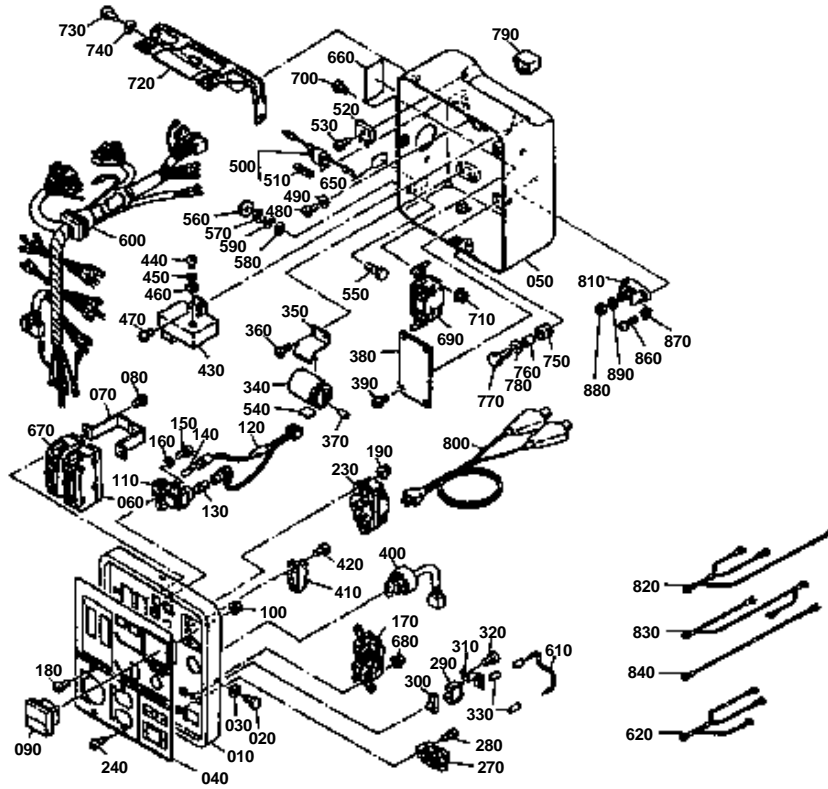
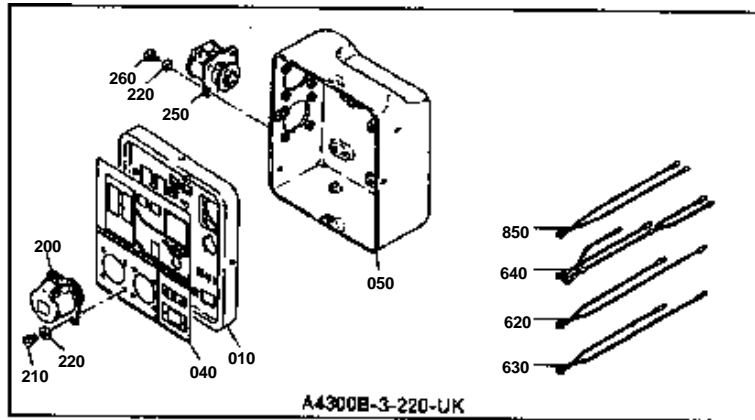


GENERATOR

↔ Interchangeable; ≠ not interchangeable; ← new for old; → old for new

REF.No	Part No.	Description	Q'ty	S.No.	I/C	REMARKS	Weight (kgf)	Weight (lb)
010	17722-02400	STATOR	1				14.2	31.24
020	17701-02410	EXCITER STATOR	1				2.46	5.412
030	17701-02300	ASSY ROTOR	1				0	0
040	17701-02800	RECTIFIER	1				0.05	0.11
050	17701-23350	BEARING	1				0.25	0.55
060	17701-02900	TERMINAL	1				0.025	0.055
070	03054-50514	SCREW PAN HEAD	2				0.004	0.0088
080	04512-50050	WASHER SPRING	2				0	0
090	04013-50050	WASHER PLAIN	2				0	0
100	02054-50050	NUT	2				0.002	0.0044
110	04512-50050	WASHER SPRING	2				0	0
120	17701-02650	RECTIFIER	1				0.03	0.066
130	03054-50516	SCREW PAN HEAD	1				0.004	0.0088
140	04013-50050	WASHER PLAIN	1				0	0
150	17701-02610	FRAME REAR	1				6.9	15.18
160	17701-02420	BOLT	2				0.026	0.0572
170	04013-50060	WASHER PLAIN	2				0	0
180	17722-02550	COVER	1				0.33	0.726
190	01020-50610	BOLT	2				0.005	0.011
200	17722-94110	WASHER PLAIN	2				0.003	0.0066
210	17701-02510	COUVER STATOR	1				0.24	0.528
220	03054-50510	SCREW PAN HEAD	1				0.003	0.0066
230	04013-50050	WASHER PLAIN	1				0	0
240	17701-02580	CLAMP	1				0.006	0.0132
250	03054-50510	SCREW PAN HEAD	1				0.003	0.0066
260	04013-50050	WASHER PLAIN	1				0	0
270	17701-02590	CLAMP	1				0.005	0.011
280	03054-50510	SCREW PAN HEAD	1				0.003	0.0066
290	04013-50050	WASHER PLAIN	1				0	0
300	17701-93310	BOLT	4				0.024	0.0528
310	04013-50060	WASHER PLAIN	4				0	0
320	04512-50060	WASHER SPRING	4				0	0
330	17701-02350	BOLT	1				0.216	0.4752
340	04013-50120	WASHER PLAIN	1				0	0
350	04512-50120	WASHER SPRING	1				0	0
360	17701-02430	SCREW	4				0.008	0.0176
370	17722-04100	CLAMP	1				0.004	0.0088
380	17722-09550	LABEL	1				0	0

CONTROL BOX 1



<p>REF.No.● WIRE HARNESS FAISCEAU ELECTRIQUE 17702-0360-0 17722-0360-0</p>	<p>REF.No.● WIRE LEAD 1 FIL 1 17701-0494-0</p> <p style="text-align: center;">610</p>	<p>REF.No.● WIRE LEAD 3 FIL 3 17702-0449-0</p> <p>REF.No.● WIRE LEAD FIL 17702-0478-0</p> <p style="text-align: center;">620 630</p>	<p>REF.No.● ASSY. WIRE LEAD ENSEMBLE FIL 17722-0449-0</p> <p style="text-align: center;">620</p>	<p>REF.No.● WIRE LEAD 2 FIL 2 17722-0495-0</p> <p style="text-align: center;">640</p>
--	--	--	---	--

**CONTROL BOX 1**

↔ Interchangeable; ≠ not interchangeable; ← new for old; → old for new

REF.No	Part No.	Description	Q'ty	S.No.	I/C	REMARKS	Weight (kgf)	Weight (lb)
010	17722-03150	BOX	1				0.5	1.1
020	17701-91190	BOLT	4				0.003	0.0066
030	04013-50050	WASHER PLAIN	4				0	0
040	17722-03210	PLATE	1				0.043	0.0946
050	17722-03010	COVER	1				0.85	1.87
060	17722-03510	BREAKER	1				0.201	0.4422
070	17722-03980	HOLDER BREAKER	1				0.04	0.088
080	03054-50406	SCREW PAN HEAD	2				0.001	0.0022
090	17722-03590	ASSY METER	1				0.045	0.099
100	17701-92050	NUT FLANGE	2				0.002	0.0044
110	17701-03720	HOLDER SOCKET	1				0.02	0.044
120	17701-03730	CORD OUTLET	1				0.02	0.044
130	17701-03410	BULB	1				0.005	0.011
140	17701-03420	BULB	1				0.003	0.0066
150	03054-50408	SCREW PAN HEAD	2				0.001	0.0022
160	04013-50040	WASHER PLAIN	2				0	0
170	17722-03260	OUTLET	1				0.07	0.154
180	17701-04850	SCREW	2				0.002	0.0044
190	17701-92130	NUT	2				0.002	0.0044
230	17722-03290	OUTLET	1				0.12	0.264
240	17701-04850	SCREW	4				0.002	0.0044
270	17701-04230	COMP RECEPTACLE	1				0.04	0.088
280	03054-50406	SCREW PAN HEAD	2				0.001	0.0022
290	17701-04720	CIRCUIT	1				0.005	0.011
300	17701-04760	COVER	1				0.004	0.0088
310	17701-04770	HOLDER BREAKER	1				0.008	0.0176
320	03054-50406	SCREW PAN HEAD	2				0.001	0.0022
330	17701-03520	TUBE	2				0.002	0.0044
340	17701-02820	CAPACITOR	1				0.044	0.0968
350	17701-03310	HOLDER	1				0.01	0.022
360	03057-50508	SCREW	2				0.001	0.0022
370	17701-03520	TUBE	2				0.002	0.0044
380	17701-03770	REGULATOR	1				0.05	0.11
390	03054-50406	SCREW PAN HEAD	4				0.001	0.0022
400	17701-03890	SWITCH MAIN	1				0.06	0.132
410	17701-03810	SWITCH STOP	1	≤701783			0.015	0.033
410	17701-03812	SWITCH SLOW DOWN	1	≥701784	≠		0.025	0.055
420	17701-91250	SCREW	2				0.001	0.0022
430	17701-04920	ASSY UNIT AUTO IDLER	1	≤701783			0.18	0.396
430	17701-04922	ASSY UNIT AUTO IDLER	1	≥701784	≠		0.21	0.462
440	03054-50512	SCRW PAN HEAD	2				0.003	0.0066
450	17701-04900	WASHER SPRING	2				0.001	0.0022
460	04013-50050	WASHER PLAIN	2				0	0
470	03014-50612	SCREW PAN HEAD	1				0.003	0.0066
480	03057-50408	SCRW	2				0.001	0.0022
490	04013-50040	WASHER PLAIN	2				0	0
500	17701-03450	HOLDER FUSE	1				0.01	0.022
510	17701-03480	FUSE	1				0.002	0.0044
520	17701-04480	RECTIFIER	1				0.01	0.022
530	03054-50516	SCREW PAN HEAD	1				0.004	0.0088
540	17701-02780	DAMPER	1				0.001	0.0022
550	01202-50620	BOLT	1				0.007	0.0154
560	17701-02440	NUT	1				0.008	0.0176
570	02014-50060	NUT	1				0.002	0.0044
580	04013-50060	WASHER PLAIN	1				0	0

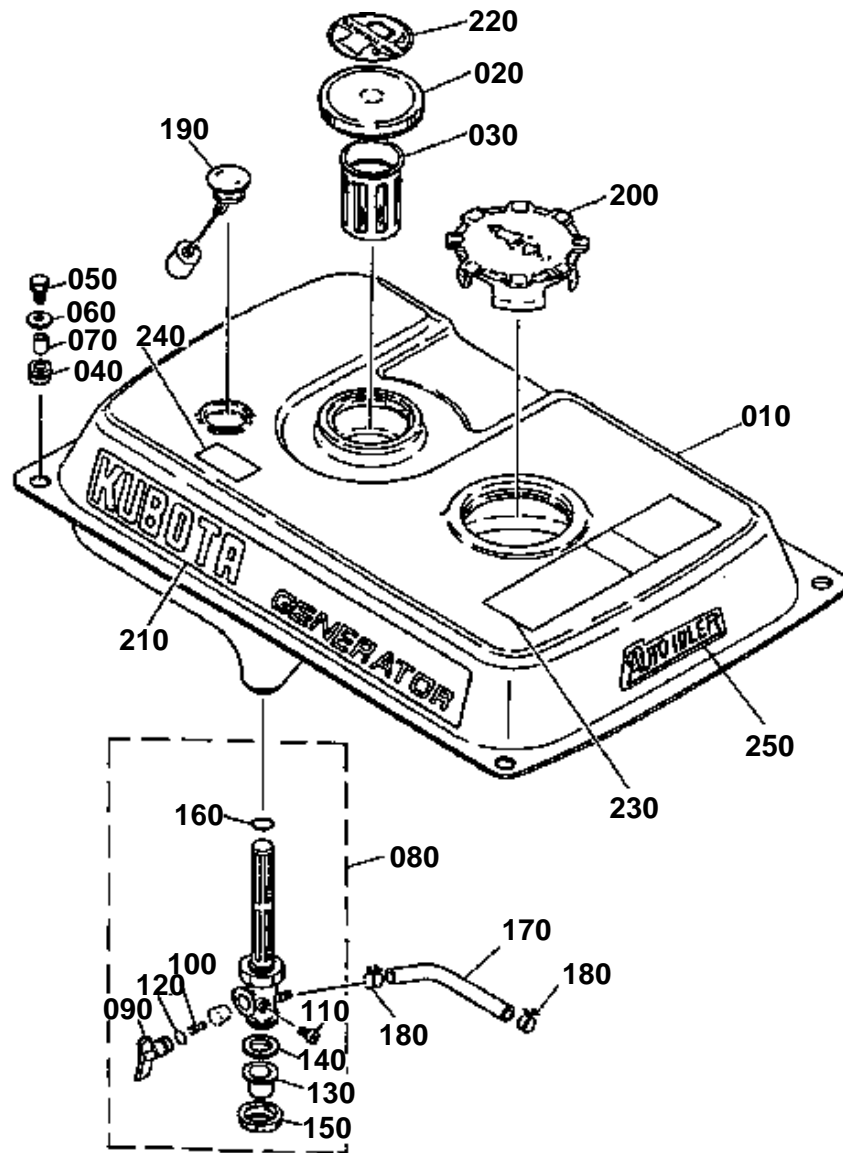


CONTROL BOX 1

↔ Interchangeable; ≠ not interchangeable; ← new for old; → old for new

REF.No	Part No.	Description	Q'ty	S.No.	I/C	REMARKS	Weight (kgf)	Weight (lb)
590	04512-50060	WASHER SPRING	1				0	0
600	17722-03800	WIRE HARNESS	1	<=701783			0.5	1.1
600	17722-03802	WIRE HARNESS	1	>=701784	≠		0.457	1.0054
610	17701-04940	WIRE LEAD 1	1	<=701783			0.003	0.0066
610	17701-04942	WIRE LEAD 1	1	>=701784	≠		0.002	0.0044
620	17722-04490	ASSY WIRE LEAD	1	<=701783			0.02	0.044
620	17722-03920	WIRE LEAD 4	1	>=701784	≠		0.035	0.077
640	17722-04950	WIRE LEAD 2	1	<=701783			0.025	0.055
650	17722-88070	EMBLEM	1				0.001	0.0022
660	17722-50300	EMBLEM	1				0.001	0.0022
670	17732-03510	BREAKER	1				0.18	0.396
680	17701-92130	NUT	2				0.002	0.0044
690	17722-03250	OUTLET	1				0.1	0.22
700	17701-04850	SCREW	2				0.002	0.0044
710	17701-92130	NUT	2				0.002	0.0044
720	17722-03990	STAY	1				0.136	0.2992
730	01202-50612	BOLT	2				0.005	0.011
740	17722-94110	WASHER PLAIN	2				0.003	0.0066
750	17701-02950	GROMMET	1				0.003	0.0066
760	17701-03570	COLLAR	1				0.002	0.0044
770	01020-50620	BOLT	1				0.006	0.0132
780	17701-04880	WASHER PLAIN	1				0.003	0.0066
790	17701-03910	COVER CONNECTOR	1				0.005	0.011
800	17701-86160	CORD CHARGE	1				0.11	0.242
810	17701-03950	ASSY TERMINAL	1	>=701784		ADOPTION ADOPTION	0.015	0.033
820	17722-04952	WIRE LEAD 2	1	>=701784		ADOPTION ADOPTION	0.02	0.044
830	17722-03930	WIRE LEAD 3	1	>=701784		ADOPTION ADOPTION	0.015	0.033
840	17722-04090	WIRE LEAD 5	1	>=701784		ADOPTION ADOPTION	0.01	0.022
860	17718-04180	SCREW	1	>=701784		ADOPTION ADOPTION	0.001	0.0022
870	17718-94110	WASHER PLAIN	1	>=701784		ADOPTION ADOPTION	0.001	0.0022
880	02054-50050	NUT	1	>=701784		ADOPTION ADOPTION	0.002	0.0044
890	04512-50050	WASHER SPRING	1	>=701784		ADOPTION ADOPTION	0	0

FUEL TANK



REF.No. ●
SCREW, VIS
09014-50520

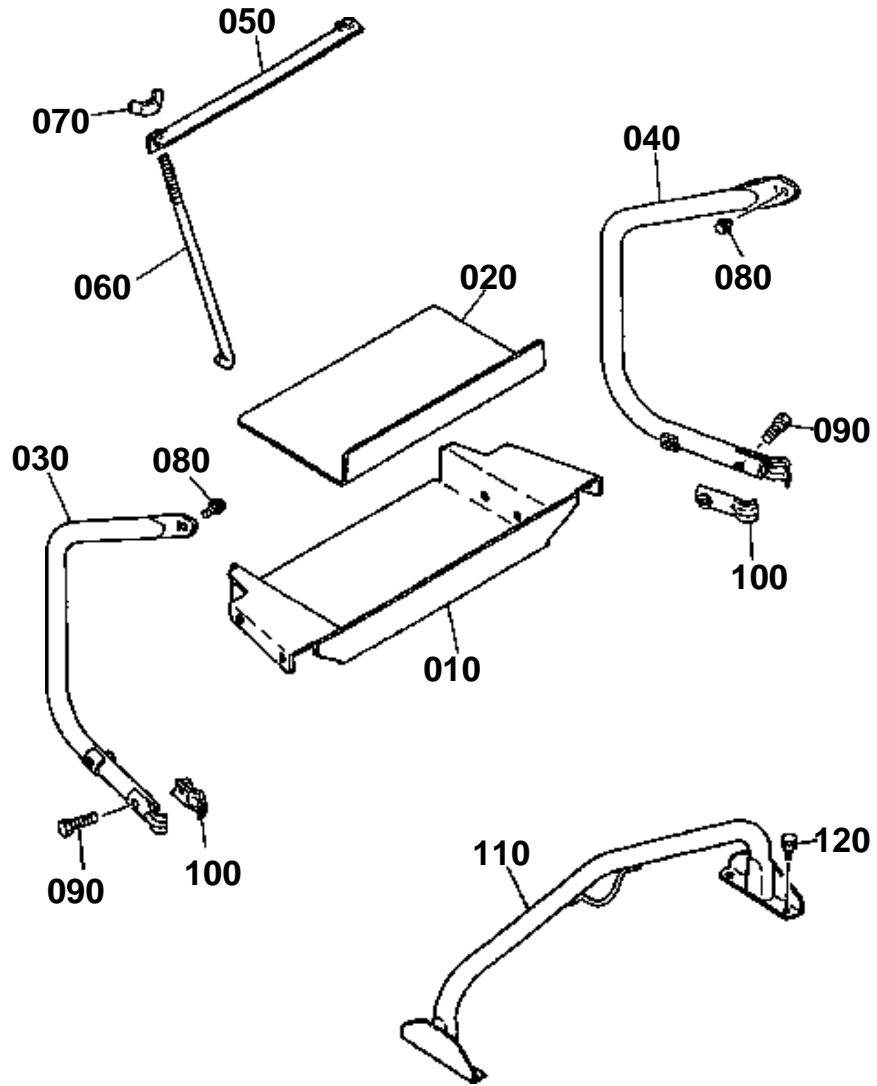


**FUEL TANK**

↔ Interchangeable; ≠ not interchangeable; ← new for old; → old for new

REF.No	Part No.	Description	Q'ty	S.No.	I/C	REMARKS	Weight (kgf)	Weight (lb)
010	17701-41010	TANK FUEL	1				4	8.8
020	17701-41260	CAP	1				0.13	0.286
030	17701-41350	STRAINER	1				0.02	0.044
040	17701-67670	GROMMET	4				0.004	0.0088
050	03014-50620	SCREW	4	≤701883			0	0
050	01020-50620	BOLT	4	≥701884	≠		0.006	0.0132
060	17701-04880	WASHER PLAIN	4				0.003	0.0066
070	17701-04830	COLLAR	4				0.003	0.0066
080	17701-43010	COCK FUEL	1				0	0
090	17701-43120	LEVER COCK	1				0.024	0.0528
100	17701-43170	SPRING	1				0.001	0.0022
110	17701-41150	LEVER SCREW	1				0.002	0.0044
120	17701-41160	O RING	1				0.002	0.0044
130	17701-43130	CAP FILTER	1				0.004	0.0088
140	17701-43140	GASKET	1				0.002	0.0044
150	17701-43680	NUT	1				0.01	0.022
160	17701-43180	GASKET	1				0.002	0.0044
170	17701-42180	PIPE	1				0.012	0.0264
180	17701-42360	CLIP	2				0.003	0.0066
190	17701-41700	GAUGE FUEL	1				0	0
200	17701-41280	PLUG	1				0.05	0.11
210	17722-09010	EMBLEM	1				0.01	0.022
220	17701-88410	GRAPHIC	1				0.005	0.011
230	17701-88210	EMBLEM	1				0.005	0.011
240	18529-88762	LABEL	1				0	0
250	18569-88560	LABEL	1				0.001	0.0022

ATTACHED PARTS

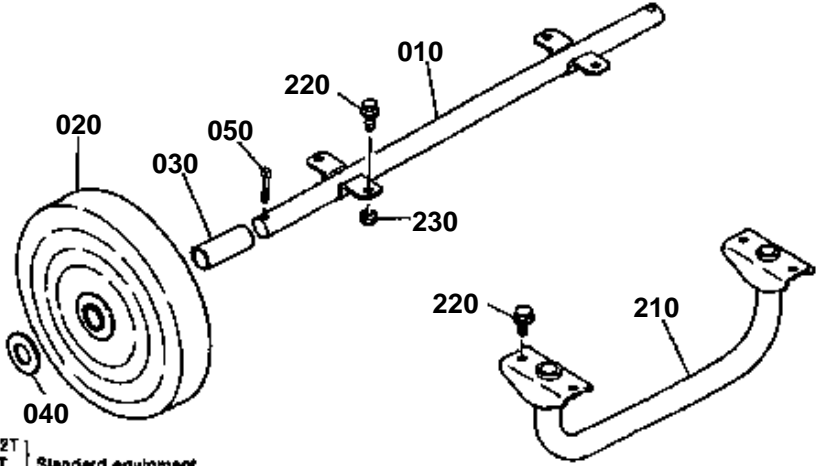
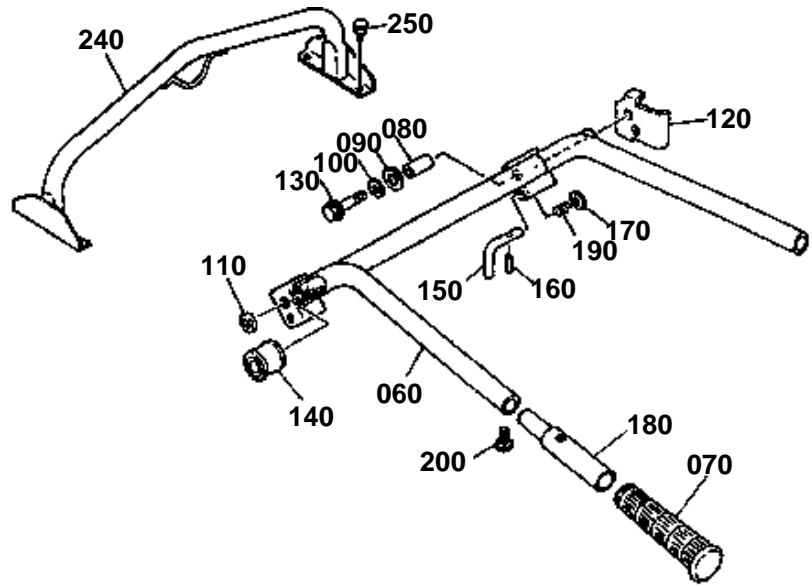


**ATTACHED PARTS**

↔ Interchangeable; ≠ not interchangeable; ← new for old; → old for new

REF.No	Part No.	Description	Q'ty	S.No.	I/C	REMARKS	Weight (kgf)	Weight (lb)
010	17701-10600	SEAT	1	≤701783			1	2.2
010	17701-10602	SEAT	1	≥701101	←		0	0
020	17701-10610	PAD	1				0.08	0.176
030	17701-10620	STAY 6	1	≤701783			0.35	0.77
030	17701-10622	STAY 6	1	≥701101	←		0	0
040	17701-10630	STAY 7	1	≤701783			0.35	0.77
040	17701-10632	STAY 7	1	≥701101	←		0	0
050	17701-10640	PLATE	1				0.11	0.242
060	17701-10650	ROD SCREW	2				0.04	0.088
070	17701-04820	NUT WING	2				0.006	0.0132
080	01120-50812	BOLT	2				0.011	0.0242
090	01202-50630	BOLT	4				0.008	0.0176
100	17701-10660	COVER	2				0.018	0.0396
110	17701-10980	HANGER	1	≤701783			0.62	1.364
110	17701-10982	HANGER	1	≥701101	←		0	0
120	17701-04860	SCREW	4				0.005	0.011

2 WHEEL [OPTION]

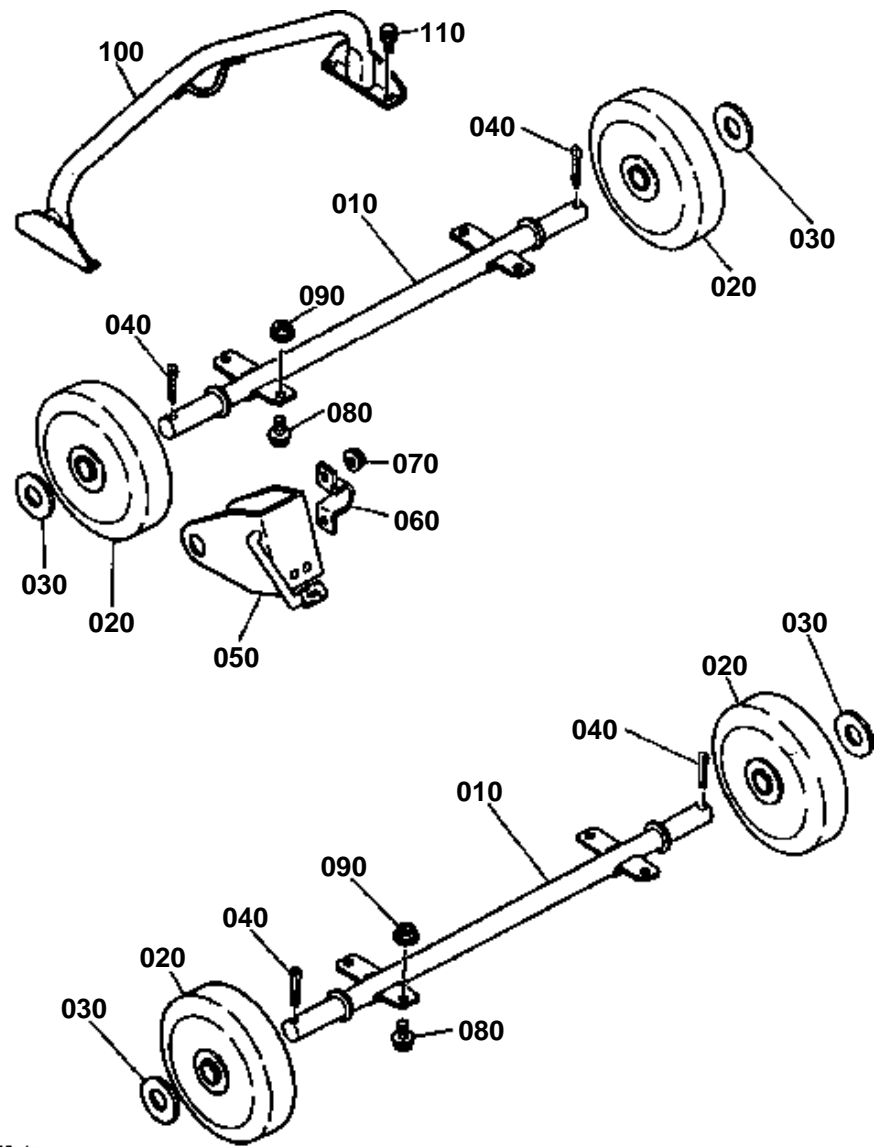


- A4300B-3-220-2T
 - A4300-3-220-2T
 - A5000B-3-220-2T
 - A5000-3-220-2T
- Standard equipment
Equipment standard

**2 WHEEL [OPTION]**

↔ Interchangeable; ≠ not interchangeable; ← new for old; → old for new

REF.No	Part No.	Description	Q'ty	S.No.	I/C	REMARKS	Weight (kgf)	Weight (lb)
010	17701-10850	ACCELERATOR	1				1.6	3.52
020	17701-10860	CASTER	2				2.77	6.094
030	17701-10870	SHAFT	2				0.085	0.187
040	04011-50200	WASHER PLAIN	2				0.015	0.033
050	17701-95020	COTTER PIN	2				0.002	0.0044
060	17701-10880	HANDLE	1	≤701783			0.95	2.09
060	17701-10882	HANDLE	1	≥701101	←		0	0
070	17701-10890	GRIP	2				0.05	0.11
080	17701-10900	COLLAR	2				0.016	0.0352
090	17701-57380	WASHER WAVE	2				0.001	0.0022
100	04015-50080	WASHER PLAIN	2				0	0
110	04013-50080	WASHER PLAIN	1				0	0
120	17701-10910	BRACKET	1	≤701783			0.08	0.176
120	17701-10912	BRACKET	1	≥701101	←		0	0
130	01120-50845	BOLT	2				0	0
140	17701-10920	STOPPER HANDLE	2				0.012	0.0264
150	17701-10930	BAR HANDLE	1				0.03	0.066
160	17701-10940	PIN SPRING	1				0.002	0.0044
170	17701-04870	WASHER PLAIN	1				0.002	0.0044
180	17701-10950	BOOT HANDLE	2				0.203	0.4466
190	17701-10960	SPRING	1				0	0
200	01202-50616	BOLT	2				0.006	0.0132
210	17701-10970	STAND MAIN	1	≤701783			0.64	1.408
210	17701-10972	STAND MAIN	1	≥701101	←		0	0
220	01202-50816	BOLT	8				0.012	0.0264
230	02112-50080	NUT	4				0.003	0.0066
240	17701-10980	HANGER	1	≤701783			0.62	1.364
240	17701-10982	HANGER	1	≥701101	←		0	0
250	17701-04860	SCREW	4				0.005	0.011



A4300B-3-220-4T	} Standard equipment	
A4300-3-220-4T		
A5000B-3-220-4T		} Equipment standard
A5000-3-220-4T		



4 WHEEL [OPTION]

↔ Interchangeable; ≠ not interchangeable; ← new for old; → old for new

REF.No	Part No.	Description	Q'ty	S.No.	I/C	REMARKS	Weight (kgf)	Weight (lb)
010	17701-10750	ACCELERATOR	2				1.56	3.432
020	17701-10760	CASTER	4				1.02	2.244
030	04011-50200	WASHER PLAIN	4				0.015	0.033
040	17701-95020	COTTER PIN	4				0.002	0.0044
050	17701-10770	BRAKE	1				0.66	1.452
060	17701-10780	CLAMP	1				0.028	0.0616
070	02112-50080	NUT	2				0.003	0.0066
080	01202-50816	BOLT	8				0.012	0.0264
090	02112-50080	NUT	8				0.003	0.0066
100	17701-10980	HANGER	1	≤701783			0.62	1.364
100	17701-10982	HANGER	1	≥701101	←		0	0
110	17701-04860	SCREW	4				0.005	0.011

IMAGE NOT AVAILABLE

**ACCESSORY**

↔ Interchangeable; ≠ not interchangeable; ← new for old; → old for new

REF.No	Part No.	Description	Q'ty	S.No.	I/C	REMARKS	Weight (kgf)	Weight (lb)
010	17701-89410	PARTS LIST	1				0.132	0.2904
020	17701-86010	TOOL KIT	1			REF.No.030 TO 050 080	0.31	0.682
030	17701-86040	SPANNER	1				0	0
040	17701-86070	SPANNER	1				0	0
050	17701-86090	ASSY BOX	1			REF.No.060 070	0	0
060	17701-86100	WRENCH	1				0	0
070	17701-86120	BOX HANDLE	1				0	0
080	17701-86130	BAG TOOL	1				0	0
090	17722-89110	MANUAL INSTRUCTION	1				0	0
120	17701-99050	BATTERY	1				4.6	10.12

IMAGE NOT AVAILABLE



SERVICE PARTS

↔ Interchangeable; ≠ not interchangeable; ← new for old; → old for new

REF.No	Part No.	Description	Q'ty	S.No.	I/C	REMARKS	Weight (kgf)	Weight (lb)
010	17701-99080	TOOL ROTOR PULLER	1			REF.No.020 030	1.15	2.53
020	17701-99110	PULLER BODY	1				0.98	2.156
030	17701-99140	BOLT CENTER	1				0.15	0.33
040	17701-99170	PULLER	1				0.023	0.0506
050	17701-99200	PULLER BOLT	1				0.028	0.0616
060	17701-99220	ROTOR PULLER	1				1.85	4.07
070	17701-99250	ROTOR ADAPTER	1				0.09	0.198
080	17701-99350	KEY	1				0.017	0.0374